

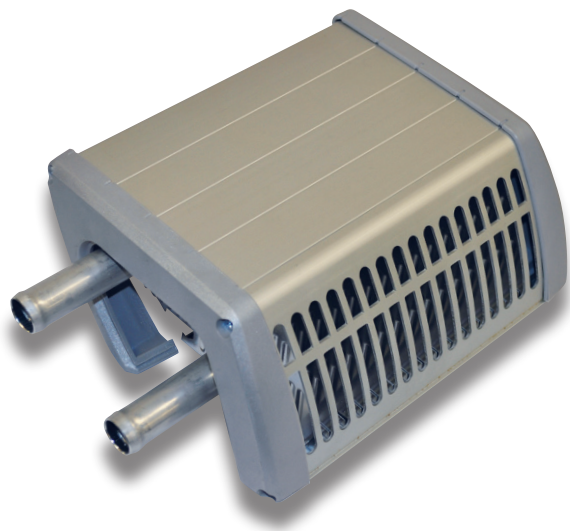


Convector **UC-9**

High heat output at a low weight

The new MCC Convector UC-9 provides efficient heating in a compact design. This convector has been specially designed to deliver maximum heat output.

It is designed to fit in buses with reinforced wall structure and comes with the necessary hardware to make installation easy.

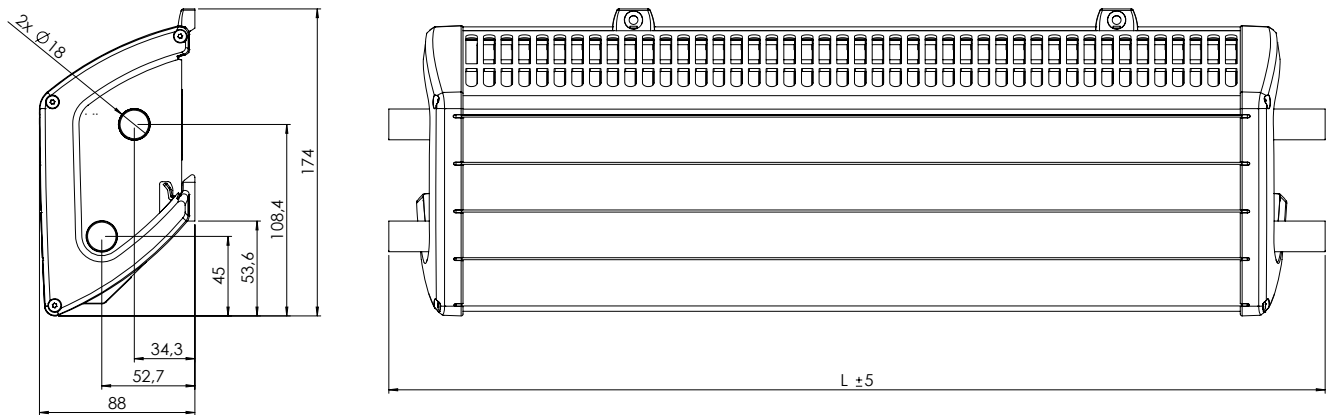


Features

- Designed to heat buses, coaches and marine applications
- Suitable for vehicles with water/glycol based heating systems
- High output
- Light and compact
- Quiet and draft-free heating
- Maintenance free
- Twin pipe for optimized heat output
- Shaped to fit reinforced wall structure

Convector UC-9

MCC Convector



Dimensions in mm

Technical Data

Heat output	2091 Btu/hr (0.61 kW) Q_{60} 3467 Btu/hr (1 kW) Q_{100} ^[1]
Piping	Copper Ø 0.7" (18 mm) + aluminium with hose connections
Weight	Copper 2.6 kg/m, aluminium 2.34 kg/m
Maximum length	197" (5 m)
Color	Silver anodized aluminium
	Please contact your MCC representative for more details

[1] The Q_x value stands for the power in kW emitted from a unit length (1 m) of the convector at a temperature difference between coolant inlet and room air equal to the subscript (x).

