

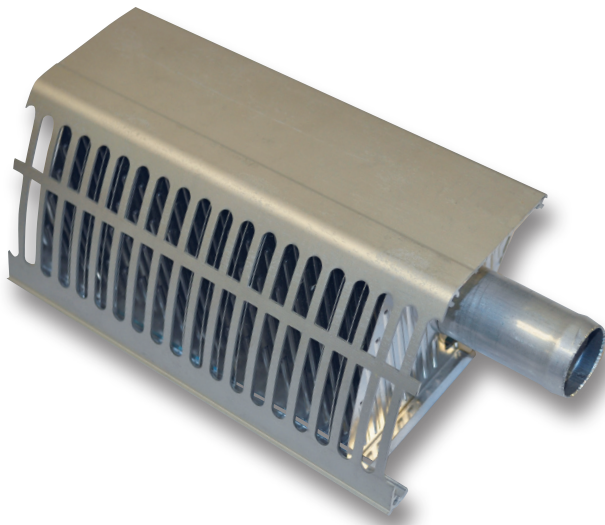


## Convector **UC-1**

# All the heat you need in one light and compact convector

Combining modern design and high capacity, the UC-1 single pipe convector is the lightest in MCC's product range and small enough to fit in tight spaces.

The UC-1 Convector is built around a single pipe made of aluminum or copper. This means the convector is very compact and requires a small mounting footprint.

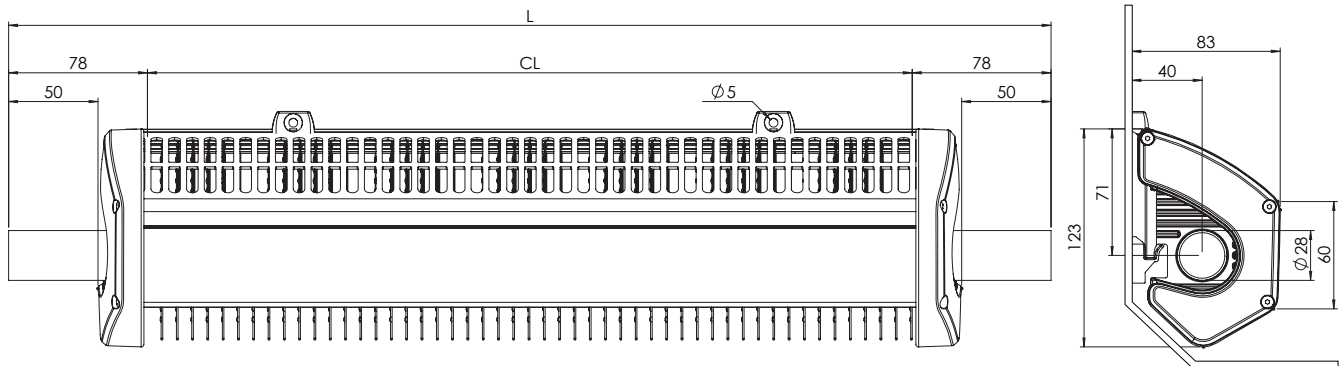


### Features

- Suitable for heating in buses and coaches
- Designed for vehicles with water glycol based heating systems
- Quiet and draft-free heating
- Maintenance free
- Single pipe for compact design
- Shaped to fit reinforced wall structures

# Convactor UC-1

MCC Convectors



Face is shaped for reinforced wall structure

Dimensions in mm

## Technical Data

Heat output	1604 Btu/hr (0.47 kW) $Q_{60}^{[1]}$ 2661 Btu/hr (0.78 kW) $Q_{100}^{[1]}$
Piping	Copper or aluminium $\varnothing$ 1.1" (28 mm) for hose connection
Weight	Copper 14 lbs/ft (1.93 kg/m), aluminium 12 lbs/ft (1.71 kg/m)
Maximum length	197" (5 m)
Color	Silver anodized aluminium
	Please contact your MCC representative for more details

[1] The  $Q_x$  value stands for the power in kW emitted from a unit length (1 m) of the convactor at a temperature difference between coolant inlet and room air equal to the subscript (x).

