



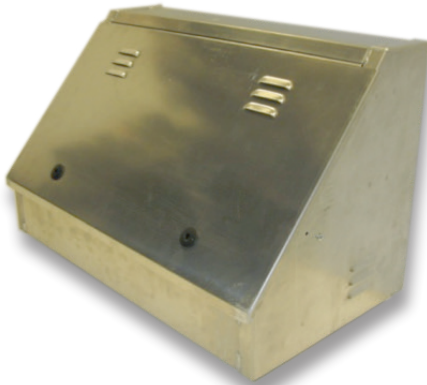
## Electric APU **EcoSleeper Lite**

# Stay comfortable and save while you rest

Relax in peace and quiet, without engine noise. The MCC EcoSleeper Lite will always give you comfortable sleeping temperature during your down time, whether the heat of the day or warm nights.

Turn off the engine, set the climate with the Electronic Climate Controller and you turn down operating costs.

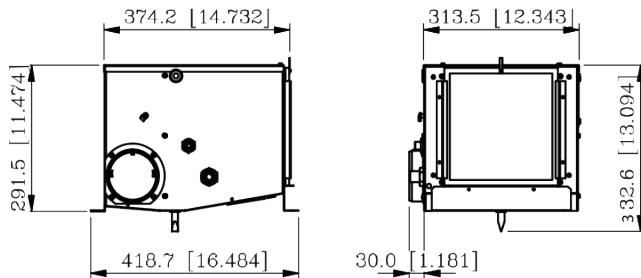
The MCC battery powered A/C system maintains an even temperature without using the truck's engine. The system is comprised of an Evaporator Unit, a Condenser Unit, a Compressor Unit and an Electronic Climate Controller. It is easy to both install and maintain.



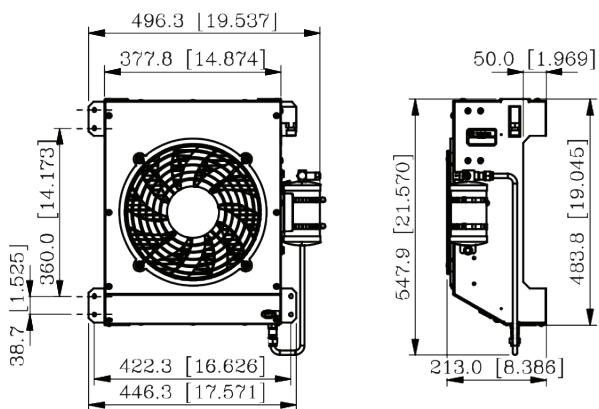
### Features

- Meets stringent anti-idling regulations
- Quiet operation less than 65dB
- Stand alone electronic climate control
- Unit run-time 8 hours (Using four AGM batteries)
- Simple unit installation and low maintenance operation
- Reduce engine wear
- Low battery voltage protection
- Fast payback
- Low weight
- Easy installation
- Low maintenance
- No fuel burned during cooling
- Advanced electronic climate control built in system
- Aluminum enclosure for durability
- Robust mounting kit options

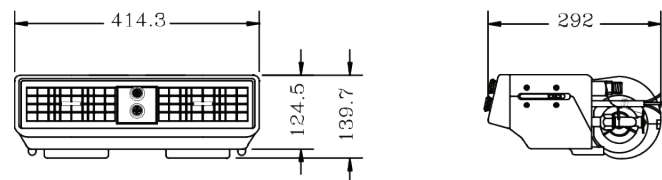
## Ducted evaporator unit



## Condenser unit



## Non-ducted evaporator unit



## Technical Data

|   | EcoSleeper Lite 8500               | EcoSleeper Lite 13000              |
|---|------------------------------------|------------------------------------|
| Cooling capacity (@95°F)                | 8500 Btu/hr (2.5 kW)               | 13000 Btu/hr (3.8 kW)              |
| Run time (hrs)                          | Up to 8                            | Up to 8                            |
| Refrigerant                             | R134a                              | R134a                              |
| Number of batteries                     | 4                                  | 4 + truck batteries                |
| Voltage                                 | 12V                                | 24V                                |
| Number of major components              | 4                                  | 4                                  |
| Power Requirements                      | 700 Watts Max                      | 1200 Watts Max                     |
| Air flow                                | 300 CFM (509.7 m <sup>3</sup> /hr) | 300 CFM (509.7 m <sup>3</sup> /hr) |
| Approx. system weight without batteries | 55 lbs (25 kg)                     | 55 lbs (25 kg)                     |

\*Truck alternator must be a minimum of 220 Amp capacity

