



Evaporator **EM-2**

MCC's EM-2 ceiling mount air conditioning evaporator has been engineered for maximum serviceability and ease of installation in commercial and school buses application.

Because the drain pan is part of the basic system, the EM-2 can be completely installed, charged and tested before

the cover is put in place, greatly reducing installation time. Simple cover removal provides ready access to all serviceable components. The EM-2 evaporator is available for non-ducted, free blow applications in 20' – 25' (610 – 762 cm) length passenger areas.

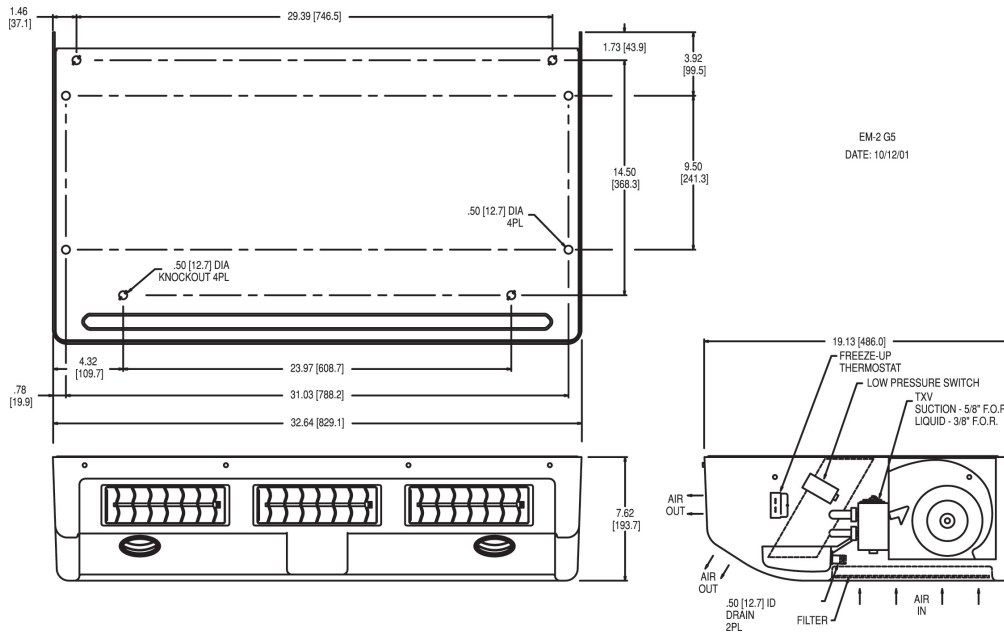


Features

- New, efficient, transverse blower technology reduces AMP draw and provides increased, uniformly distributed air flow
- Heavy-duty galvanized steel frame is reinforced for added strength
- High volume air flow, widely dispersed through bi-directional louvers for total passenger comfort
- State-of-the-art enhanced coils for maximum cooling capacity and increased efficiency
- Return Air filter can be removed and cleaned without removing the unit cover
- Higher capacity unit in a smaller package (height reduced over 20% from existing models, significantly increasing head clearance)
- Configurations of three or more variable speed blower are available for full air flow adjustment to optimize system to individual cooling preferences
- Reduced service time and overall life cycle cost with single, easily accessible motor, bottom mounted air filter, 10% fewer parts and fasteners than previous models
- Can be front/rear, center or front/rear side mounted in different bus applications

Evaporator EM-2

MCC Evaporators



Technical Data

Cooling capacity	45000 Btu/hr (13 kW) IMACA ^[1]	18500 Btu/hr (5.4 kW) ARI ^[2]
Air flow	1200 CFM (2039 m ³ /hr)	
Refrigerant	R134a	
Length	33.9" (862 mm)	
Width	19.13" (486 mm)	
Height	7.62" (193.5 mm)	
Weight	49 lbs (22 kg)	
Condensate drain connection	½" (12.7 mm) O.D	
Max amperage requirement	24.3 A @ 13.5 V dc (High Speed)	
Voltage	12 or 24 VDC	
Cover color	Snow White or Dove Gray	

[1] IMACA conditions: 100°F (38°C) / 90°F (32°C) / 50% RH

[2] ARI conditions: 95°F (35°C) / 80°F (27°C) / 50% RH

