

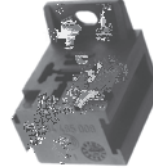
**Relays**



25-0251  
12 V 40/30A  
25-0219  
24V 40A

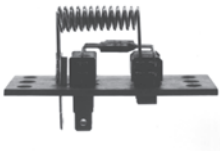


25-0074  
12V 40/30A



25-0221  
Socket for 25-0251  
and 25-0219

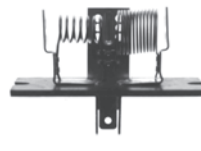
**Resistors**



25-0136 12V(0.4 | +0.4 | )300°F(150°C)  
meltfuse

25-0156 24V (1.8 | +2.0 | )

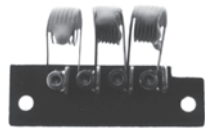
25-0552 24V (0.8 | +1.8 | )



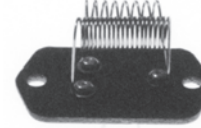
25-0120  
12V (0.5 | +1.3 | )

25-0139

12V (0.35 | +1.5 | )



25-0095  
12V (0.5 | +0.5 | +1 | )



25-0090  
24V (1.4 | +4.5 | )



25-0601 12V (0.4 | +1.5 | ) ceramic 333°F (167°C) meltfuse

25-0602 24V (1.2 | +3.5 | ) ceramic 333°F (167°C) meltfuse

25-0604 24V (0.8 | +1.8 | )

29-0130 Resistor bracket for ceramic resistor Used with blower #515 (not pictured)

**Diodes**



25-0097 Heavy duty type, 12 amp, 10-32 thread

**Automatic Circuit Breakers**



25-0026 12V, 30 amp, 1/4" male terminal (Not pictured)

25-0406 24V, 20 amp, 10-32 thread

25-0421 24V, 12 amp, 10-32 thread

25-0442 12V, 40 amp, 10-32 thread

**Junction Block**



25-0006 10-32 thread brass studs, rated 30A, 600V.  
Max 302°F (150°C)

## Pressure Switches

Pressure switches safeguard the compressor against extreme high and low pressures. This occurs when condenser capacity is reduced or after a loss of refrigerant. Recommended to be installed on the receiver-driers. They can also be installed on special fitting with switch port.



25-0038  
R12 Male 3/8" - 24  
25-0058  
R12 Male 3/8" - 24  
25-0308  
R134a Male 3/8" - 24  
25-0667  
R134a Male 3/8" - 24



25-0343  
R134a Fe 7/16" - 20  
fits schrader valves  
25-0674  
R134a Fe 7/16" - 20  
fits schrader valves

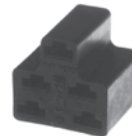
Cut Out Pressure Settings Psig (MPa)			
Part	High	Medium	Low
25-0038	370 (2.6)	-	27 (0.2)
25-0058	370 (2.6)	213 (1.5)	27 (0.2)
25-0308	455 (3.1)	-	28 (0.2)
25-0667	455 (3.1)	228 (1.6)	28 (0.2)
25-0343	455 (3.1)	-	28 (0.2)
25-0674	455 (3.1)	228 (1.6)	28 (0.2)

## Rotary Switches



25-0029  
For 3 speed motors, 15 amp, 4 pos  
25-0044  
For 3 speed motors, 25 amp, 4 pos  
25-0305  
For 2 speed motors, 15 amp, 3 pos  
25-0307  
On/off, 15 amp, 2 pos

Rotary switches include 25-0066 nut. Switches 25-0029/44/28 include an A/C circuit that closes when in low, medium or high speed



25-0034  
Connector for 25-0029/44



25-0028  
For 3 speed motors, 15 amp with resistor, 4 pos. Must be mounted in the air stream for cooling

## Toggle Switches



25-0536  
Two positions  
25-0537  
Three positions



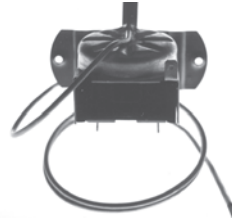
25-0100  
For 3 speed motors, 15 amp, 4 pos  
Includes an A/C circuit that closes when in low medium or high speed.

**Thermostats**

**All thermostats include nut 25-0066.** Thermostats are used to prevent icing of the coil by cycling the compressor clutch. Temp settings are 26° F (-3°C) cut out and 35° F (2° C) cut in. Capillary tube to be inserted at the coldest area in the coil. It must be inserted with minimum 15% of the capillary tubes total length.



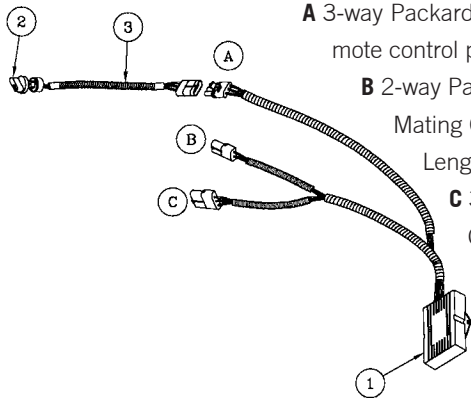
- 25-0030 19" capillary tube
- 25-0045 36" capillary tube
- 25-0118 As above with PVC tube protected capillary tube



- 25-0069 24" capillary tube
- 28-0031 PVC tube 1/4" OD  
**(Not pictured)**  
(used to protect capillary tube, specify length when ordering)

**Stepless Blower Controller**

**19-0062 Blower Speed Kit**



**A** 3-way Packard Weather Pack to Potentiometer Assy., an extension wire harness can be supplied for remote control panel installations. Length 21.7±0.2 (550±5)

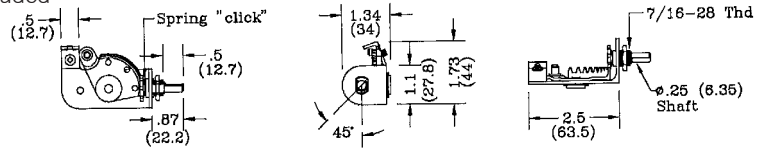
**B** 2-way Packard Weather Pack to Blower Motor Terminals: (A) Battery -A , (B) Motor-B  
Mating Connector: MCC #31-1068, with terminal MCC #31-1039  
Length 23±0.2 (585±.5)

**C** 3-way Packard Weather Pack to Power Input Terminals: (A) Battery-A, (B) Ground-C (C) Ignition-G Mating Connector: MCC #31-1091, with terminal MCC #31-1026 Length 23±0.2 (585±5)

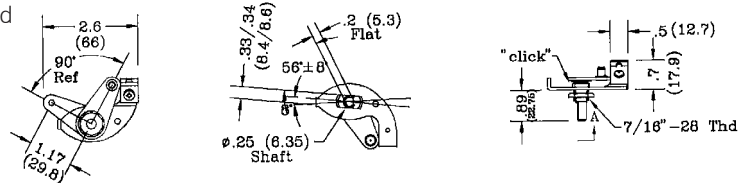
No.	Part No.	Description
1	35-0033	Motor Stepless Control
2	25-0581	Knob
3	35-0036	Potentiometer Assy.

**Rotary Controls**

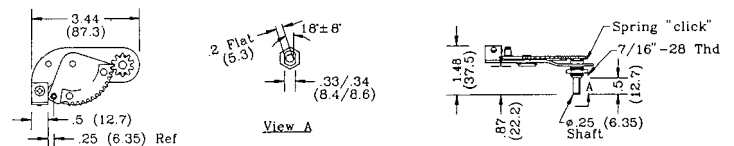
26-0350 Heavy duty steel rotary control, nut 25-0066 included



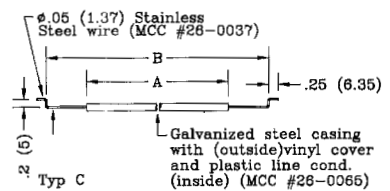
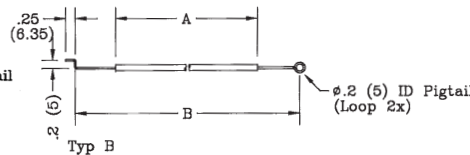
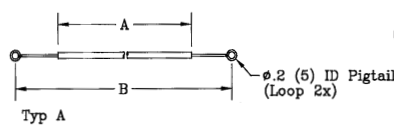
26-0345 Heavy duty steel rotary control, nut 25-0066 included



26-0359 Heavy duty steel rotary control, nut 25-0066 included



**Bowden Cables**



26-0037 Stainless steel wire  
Specify length when ordering

26-0065 Vinyl cover galvanized steel spring with plastic insert.  
Specify length when ordering.

29-0424 3/16" pushnut used for holding pigtails on shafts

(Use this Bowden Cable with metal controls only.)  
Vinyl cover to be removed under cable clamp.

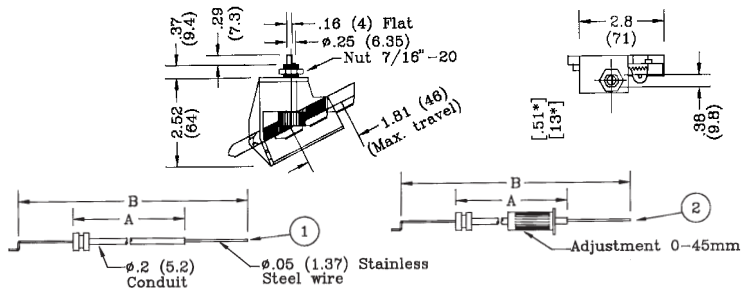
**Injection Molded Rotary Control & Cable**

26-0095 Medium duty injection molded rotary control, nut included.

26-0335 As above but with extended shaft (13mm) nut included.

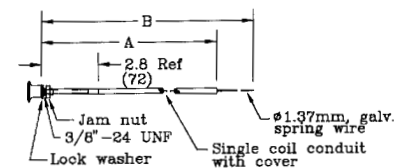
Sym	Part No.	Description	Note	A mm	B mm	A in	B in
	29-0040	Nut 7/16" - 20					
2	26-0099	Bowden Cable	With adjuster	2100	2250	82	88
2	26-0097	Bowden Cable	With adjuster	1100	1250	46	49
1	26-0098	Bowden Cable	W/O adjuster	2100	2250	82	88
1	26-0096	Bowden Cable	W/O adjuster	1100	1250	46	49

Use these bowden cables with injection molded controls only



**Push & Pull Control**

26-0008 Pull and push control for heavy duty use. A = 84" (2124 mm) B = 90" (2286 mm) 26-0058  
26-0058 Longer version of above. A = 156" (3962 mm) B = 162" (4124 mm)



**Fuse Holder**
**INLINE FUSE HOLDER**

25-0682	Fuse holder (in Line)	Little Fuse	FHAC - 2	.75
25-0568	Fuse 3A	Little Fuse	ATO - 7.5	.18
25-0569	Fuse 5A	Little Fuse	ATO - 7.5	.18
25-0683	Fuse 7.5A	Little Fuse	ATO - 7.5	.18
25-0684	Fuse 10A	Little Fuse	ATO - 10	.18
25-0685	Fuse 15A	Little Fuse	ATO - 15	.18
25-0686	Fuse 20A	Little Fuse	ATO - 20	.18
25-0687	Fuse 25A	Little Fuse	ATO - 25	.18
25-0688	Fuse 30A	Little Fuse	ATO - 30	.18
25-0689	Fuse 40A	Little Fuse	ATO - 40	.18

