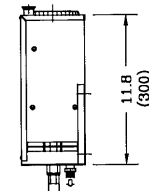
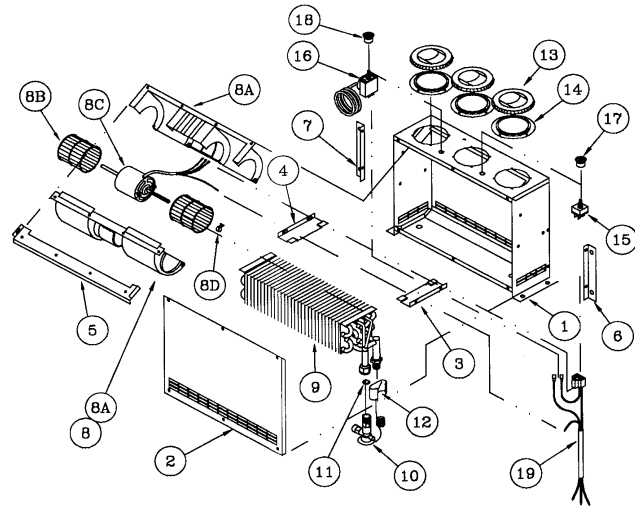
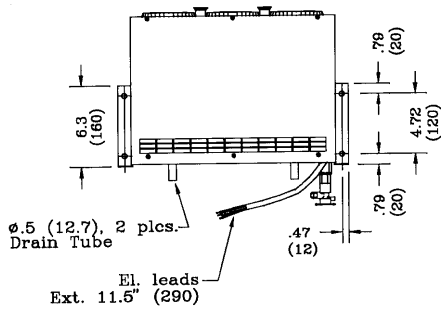
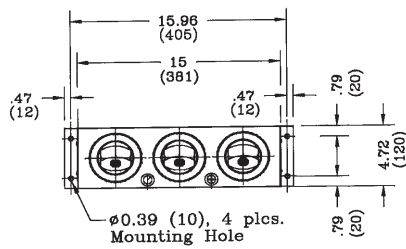
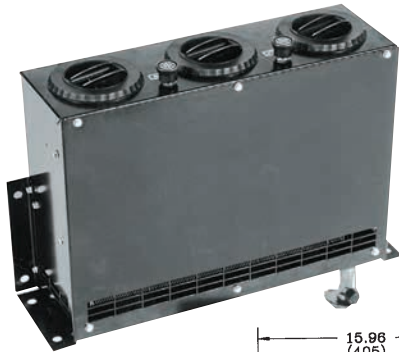




IX. Compact AC

Air Conditioner Model 301



5/8" - 18 Male (OR #6)
7/8" - 14 Male (OR #10)
Refr. Hose Connection

El. Connection
Orange - Power (+)
Black - Ground (-)
White - To pressure switch/
compressor
Blue - To condenser/relay
(if fan condenser)

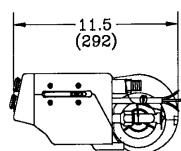
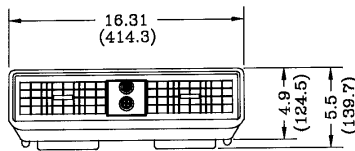
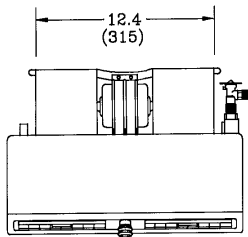
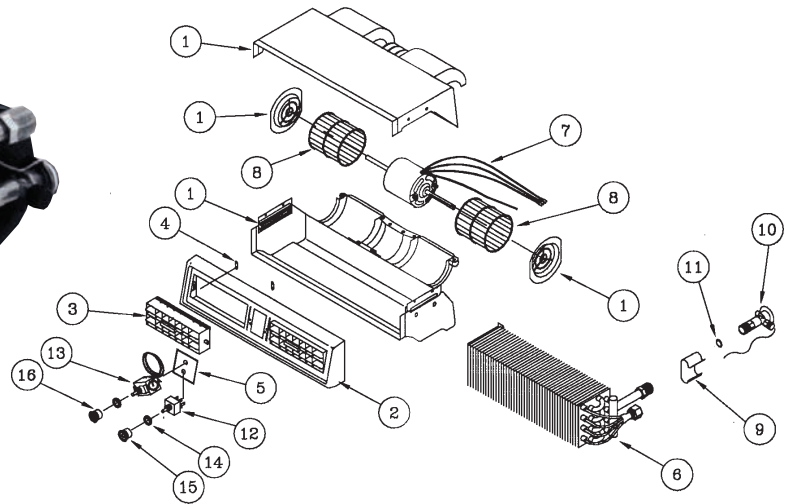
Part Descriptions: Specifications

Part No.	No.	Part No.	Description	No.	Part No.	Description
13-0121		Air Conditioner 12V		1	24-1584	Casing
13-0122		Air Conditioner 24V		2	24-1585	Cover
				3	24-1586	Coil Bracket (R)
				4	24-1587	Coil Bracket (L)
				5	24-1588	Blower Support
				6	24-1941	Mounting Bracket (R)
				7	24-1942	Mounting Bracket (L)
				8	15-0503	Blower 12V
					15-0504	Blower 24V
				8A	25-0017	Blower Housing
				8B	25-0021	Blower Wheel
				8C	25-0070	Motor 12V
					25-0076	Motor 24V
				8D	25-0022	Clip
				9	21-0276	Evaporator Coil
				10	26-0162	Expansion Valve
				11	27-0602	O-Ring #8
				12	26-0006	Bulb Clamp
				13	23-0005	Louver
				14	23-0048	Adapter
				15	25-0029	Blower Switch
				16	25-0045	Thermostat
				17	25-0067	Knob
				18	25-0068	Knob
				19	25-0586	Wiring Harness

Features

The 301 is a compact air conditioner that is ideal for small cabs. It can be wall mounted or used as a stand alone floor mount.

Air Conditioner Model 302



El. leads, Ext.16±2
(400±50)
White -from Thermostat
Orange -Power
Black-Ground

0.5 (12.7) OD, 2 plcs.
Drain Tube

Part Descriptions: Specifications

Part No.	No.	Part No.	Description	No.	Part No.	Description	
13-0221		1	28-0001	Case	9	26-0006	Bulb Clamp
13-0222		2	28-0002	Bezel	10	26-0162	Expansion Valve
		3	23-0011	Louver	11	27-0602	O-Ring #8
		4	23-0028	Louver Strip	12	25-0029	Switch
		5	25-0032	Switch Plate	13	25-0030	Thermostat
		6	21-0003	Evaporator Coil	14	25-0059	Nut Cover
		7	25-0677	Motor 12V	15	25-0067	Knob
			25-0678	Motor 24V	16	25-0068	Knob
		8	25-0021	Blower Wheel	17	25-0679	Wiring Harness (Not Shown)

Specifications

Cooling	-17950 Btu/hr (5260 W)
Air Flow	-250 CFM (425 m³/h)
Current	-11 Amps/13.5V -5.5 Amps/27V
Weight	-9 lbs. (4 kg)

3-Speed motor.

Features

The 302 is a compact unit that can be ducted to deliver air flow where desired. Ideal for dash or compartment mounting.

Air Conditioner **Model 355**



Part Descriptions: Specifications

Part No.		Specifications	
13-5521	Air Conditioner 12V	Cooling	-20000 Btu/hr (5860 W)
13-5522	Air Conditioner 24V	Air Flow	-275 CFM (468 m ³ /h)
		Current	-12 Amps/13.5V -6 Amps/27V
		Weight	-31 lbs. (14 kg)

Made of 18GA (1.25mm) Cold Rolled Steel and finished in grey epoxy powder coat.

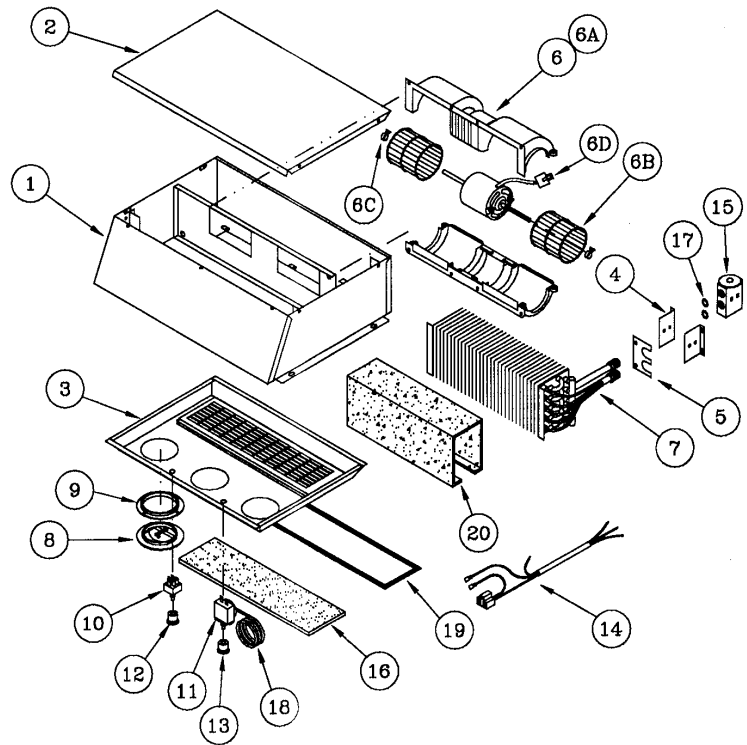
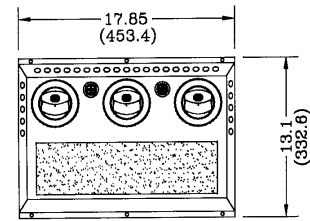
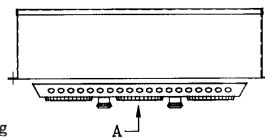
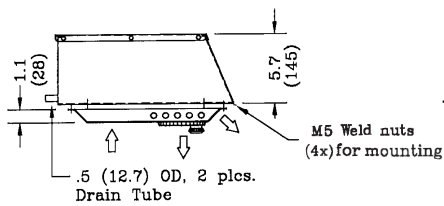
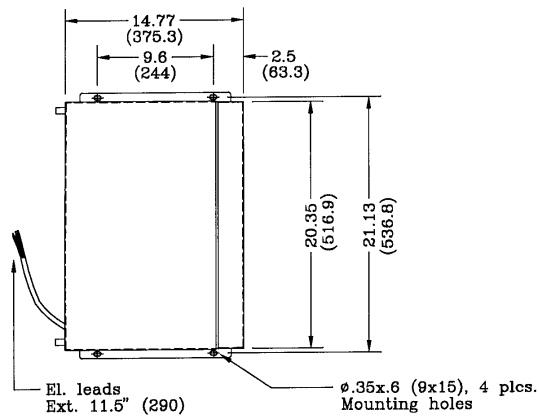
Features

The 355 is a low profile roof mount air conditioner.

Dimension Profiles

El. Connection

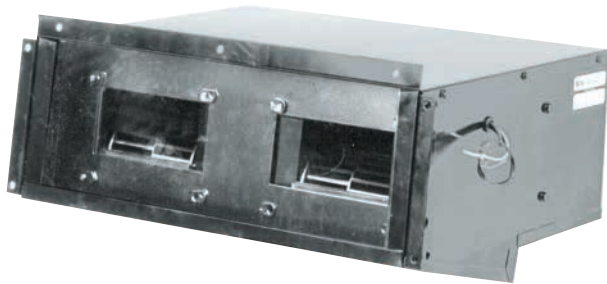
- Orange—Power(+)
- Black—Ground(-)
- White—To pressure switch/ compressor
- Blue—To condenser/relay (if fan condenser)



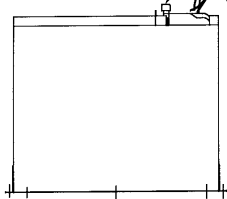
Part Descriptions: Specifications

No.	Part No.	Description	No.	Part No.	Description	No.	Part No.	Description
1	24-2177	Casing Assy.	6C	25-0643	Motor 12V	13	25-0068	Knob (Temp.)
2	24-2296	Cover Assy.		25-0644	Motor 24V	14	25-0672	Wiring Harness
3	24-2437	Air Plenum	6D	25-0022	Clip	15	26-0190	Block Valve
4	24-2439	Support Bracket	7	21-0399	Evaporator Coil	16	26-0431	Air Filter
5	24-2440	Cover Plate	8	23-0005	Louver	17	27-0602	O-Ring #8
6	15-0533	Blower 12V	9	23-0048	Adapter	18	28-0031	PVC Hose
	15-0534	Blower 24V	10	25-0044	Blower Switch	19	28-0166	Hook Tape
6A	25-0017	Blower Housing	11	25-0045	Thermostat	20	28-0230	Reticulated Foam
6B	25-0021	Blower Wheel	12	25-0067	Knob(Fan)			

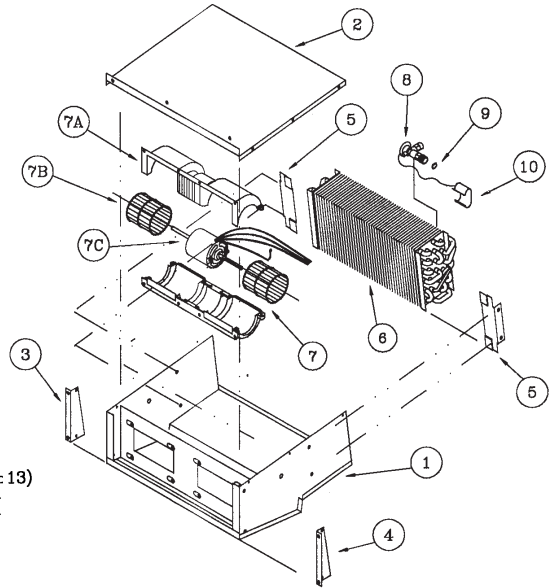
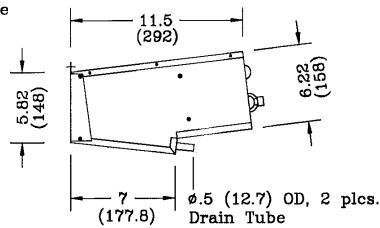
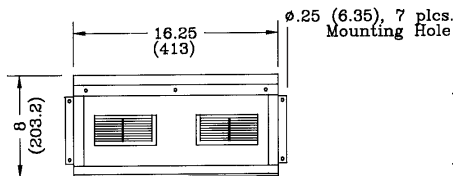
Air Conditioner Model 311



5/8-18 Male (OR #6)
7/8-14 Male (OR #10)
Refr. Hose Connections



EL Leads, Ext. 5"±.5" (127±13)
Orange-High, Red-Medium
Yellow-Low, Black-Ground



Part Descriptions: Specifications

Part No.	No.	Part No.	Description	No.	Part No.	Description	
13-1153		1	24-0267	Casing	7A	25-0017	Blower Housing
13-1154		2	24-0270	Cover	7B	25-0021	Blower Wheel
		3	24-0192	Mounting Bracket (L)	7C	25-0070	Motor 12V
		4	24-0193	Mounting Bracket (R)		25-0075	Motor 24V
		5	24-0194	Coil Bracket	8	26-0162	Expansion Valve
		6	21-0045	Evaporator Coil	9	27-0602	O-Ring #8
		7	15-0503	Blower Assy. 12V	10	26-0006	Bulb Clamp
			15-0504	Blower Assy. 24V			

Specifications

Cooling -21800 Btu/hr (6390 W)
Air Flow -325 CFM (552 m³/h)
Current -11.6 Amps/13.5V
-5.8 Amps/27V
Weight -17 lbs. (7.7 kg)

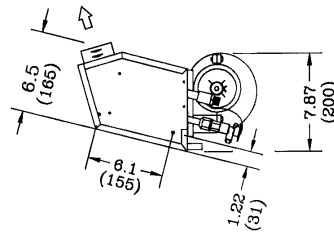
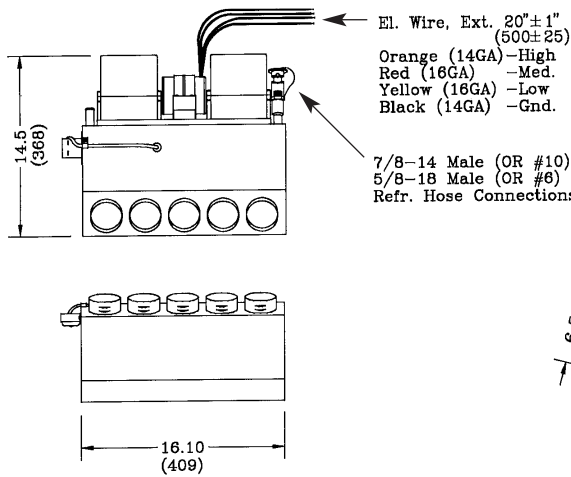
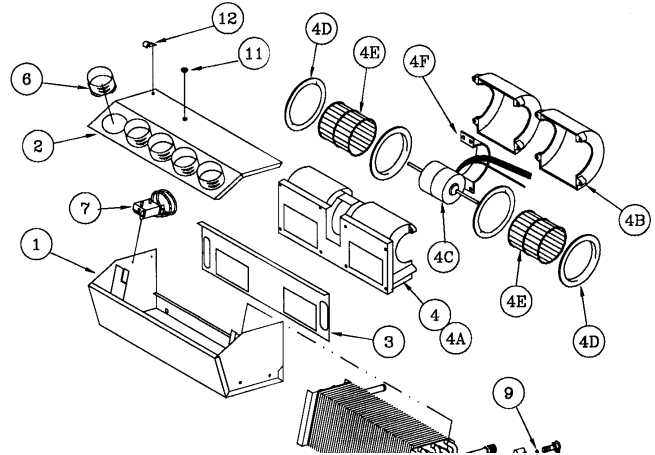
3-Speed motor.

Made of 18GA (1.25mm) Cold Rolled Steel and finished in black semi-gloss epoxy powder coat. Louvers have to be ordered separately.

Features

The 311 is ideal for ambulance requirements.

Heater-Air Conditioner **Model 306**



Part Descriptions: Specifications

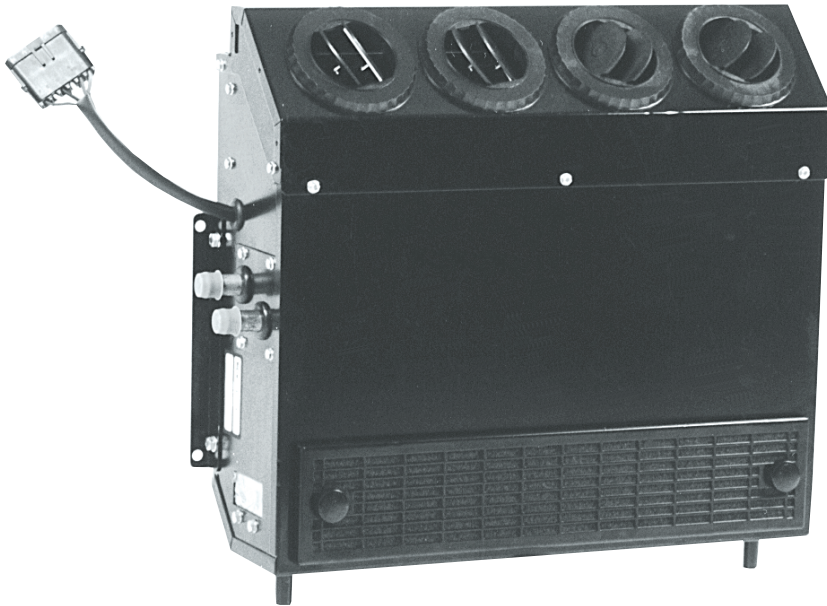
Part No.	No.	Part No.	Description	No.	Part No.	Description
13-0651		Heater-AC 12V				
13-0652		Heater-AC 24V				
Specifications						
Heating		-33000 Btu/hr (9675 W)				
Cooling		-22500 Btu/hr (6685 W)				
Air Flow		-400 CFM (680 m ³ /h)				
Current		-14 Amps/13.5V				
		-7 Amps/27V				
Weight		-19 lbs. (8.6 kg)				
	1	24-0035	Casing	4E	25-0200	Blower Wheel
	2	24-0404	Cover	4F	25-0271	Motor Mount
	3	24-0497	Blower Plate	5	21-0005	Combo Coil
	4	15-1513	Blower 12V	6	23-0038	Hose Adapter 2 1/2"
		15-1514	Blower 24V	7	25-0069	Thermostat
	4A	25-0048	Blower Housing	8	26-0162	Expansion Valve
	4B	25-0348	Housing Top	9	27-0602	O-Ring #8
	4C	25-0053	Motor 12V	10	26-0006	Bulb Clamp
		25-0076	Motor 24V	11	28-0021	Snap-in Plug
	4D	25-0060	Venturi	12	29-0139	Half Clamp 5/16"

Casing made of 18GA (1.25mm) Cold Rolled Steel and finished in black semi-gloss epoxy powder coat.

Features

The 306 is ideal for under seat or dash mounting. It's high performance capacity can handle most cab requirements. It can also be used in limousine applications.

Heater-Air Conditioner **Model 310**



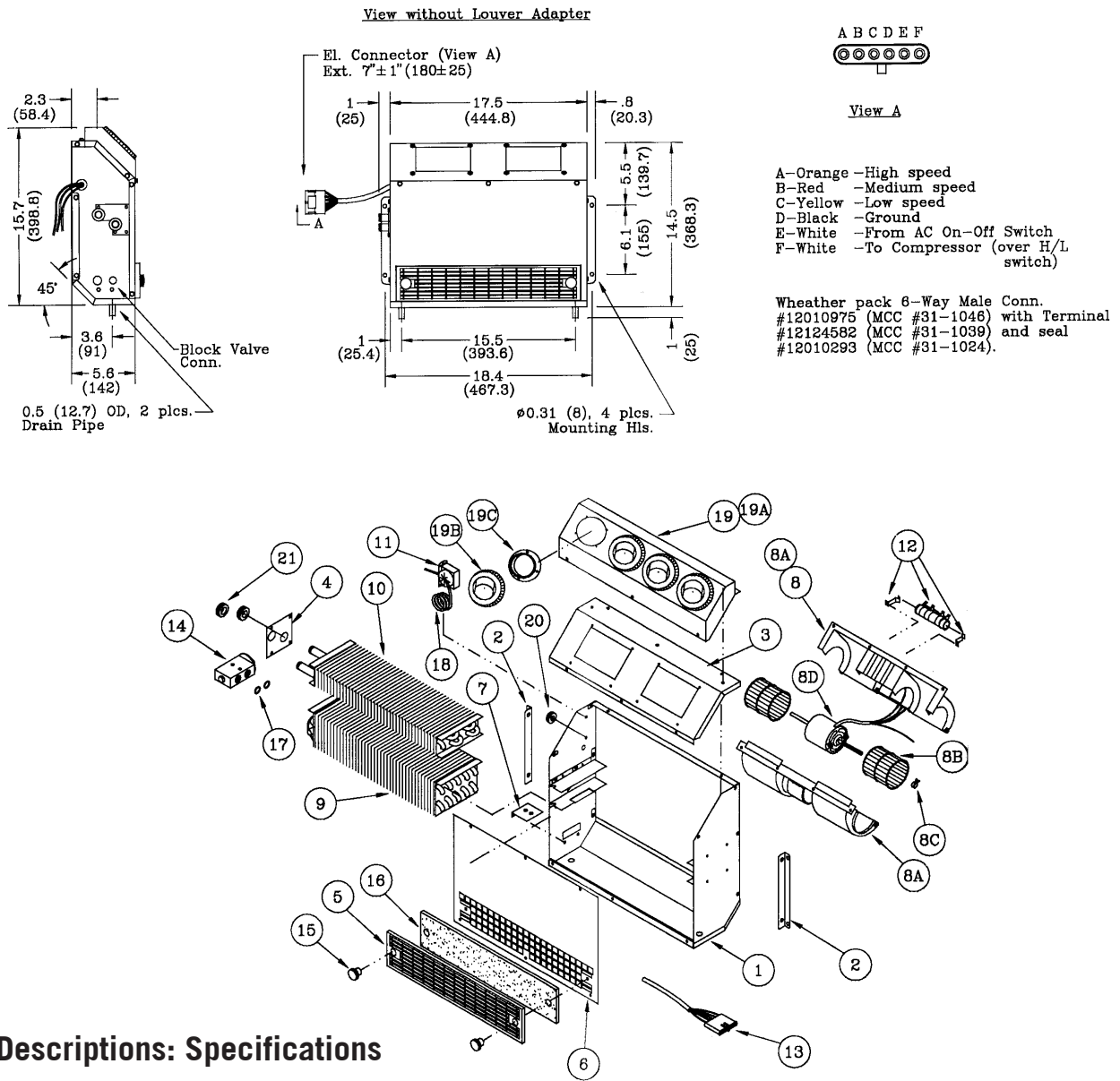
Part Descriptions: Specifications

Part No.		Specifications		
13-1003	Heater-AC 12V	Heating	-25500 Btu/hr (7480 W)	Made of 18GA (1.25mm) Cold Rolled Steel and finished in black semi-gloss epoxy powder coat.
13-1004	Heater-AC 24V	Cooling	-19775 Btu/hr (5800 W)	
13-1023	Air Conditioner 12V	Air Flow	-300 CFM (510 m ³ /h)	
13-1024	Air Conditioner 24V	Current	-12 Amps/13V	
13-1090	Plenum Assy. Incl.19A, 19B, 19C	Weight	-6 Amps/27V -27.3 lbs. (12.4 kg)	

Features

The 310 is a compact unit that can be used as a free blowing or ducting unit to direct air around the cab. A remote mount control panel is required for this system.

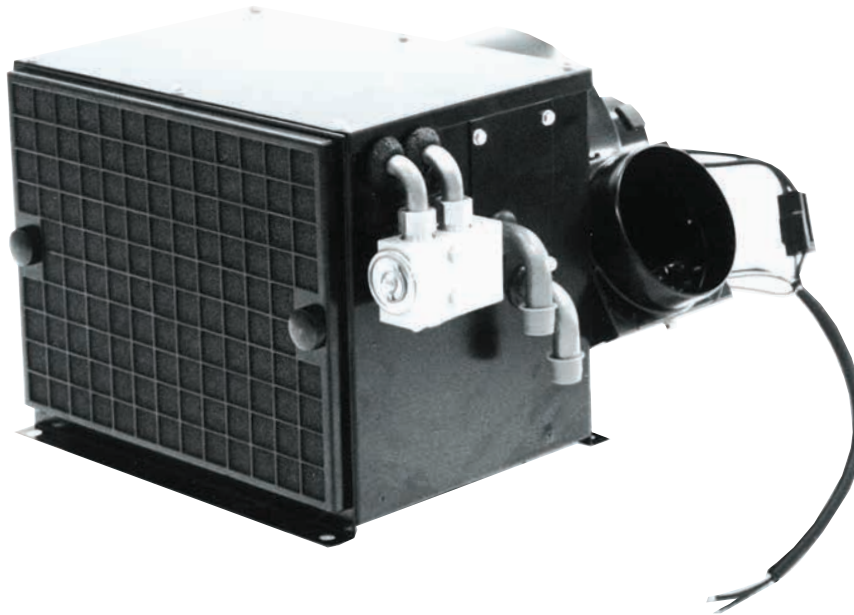
Dimension Profiles



Part Descriptions: Specifications

No.	Part No.	Description	No.	Part No.	Description	No.	Part No.	Description
1	24-2124	Casing	8B	25-0021	Blower Wheel	15	26-0263	Knurled Knob
2	24-2125	Mounting Bracket	8C	25-0022	Clip	16	26-0399	Air Filter
3	24-2126	Blower Plate	8D	25-0228	Motor 12V	17	27-0602	O-Ring
4	24-2166	Cover Plate		25-0298	Motor 24V	18	28-0031	PVC Hose
5	24-2167	Grill	9	21-0364	Evaporator	19	13-1090	Plenum Assy.
6	24-2168	Front Cover	10	22-0319	Heater Coil			Inc. 19A, B, C.
7	24-2211	Expansion Valve Bkt.	11	25-0069	Thermostat	19A	24-2396	Plenum
8	15-0551	Blower 12V	12	25-0601	Resistor 12V	19B	23-0005	Louver
	15-0552	Blower 24V		25-0602	Resistor 24V	19C	23-0048	Adapter
8A	25-0017	Blower Housing	13	25-0664	Wiring Harness	20	28-0004	Grommet
			14	26-0190	Block Valve	21	28-0009	Grommet

Heater-Air Conditioner **Model 316**



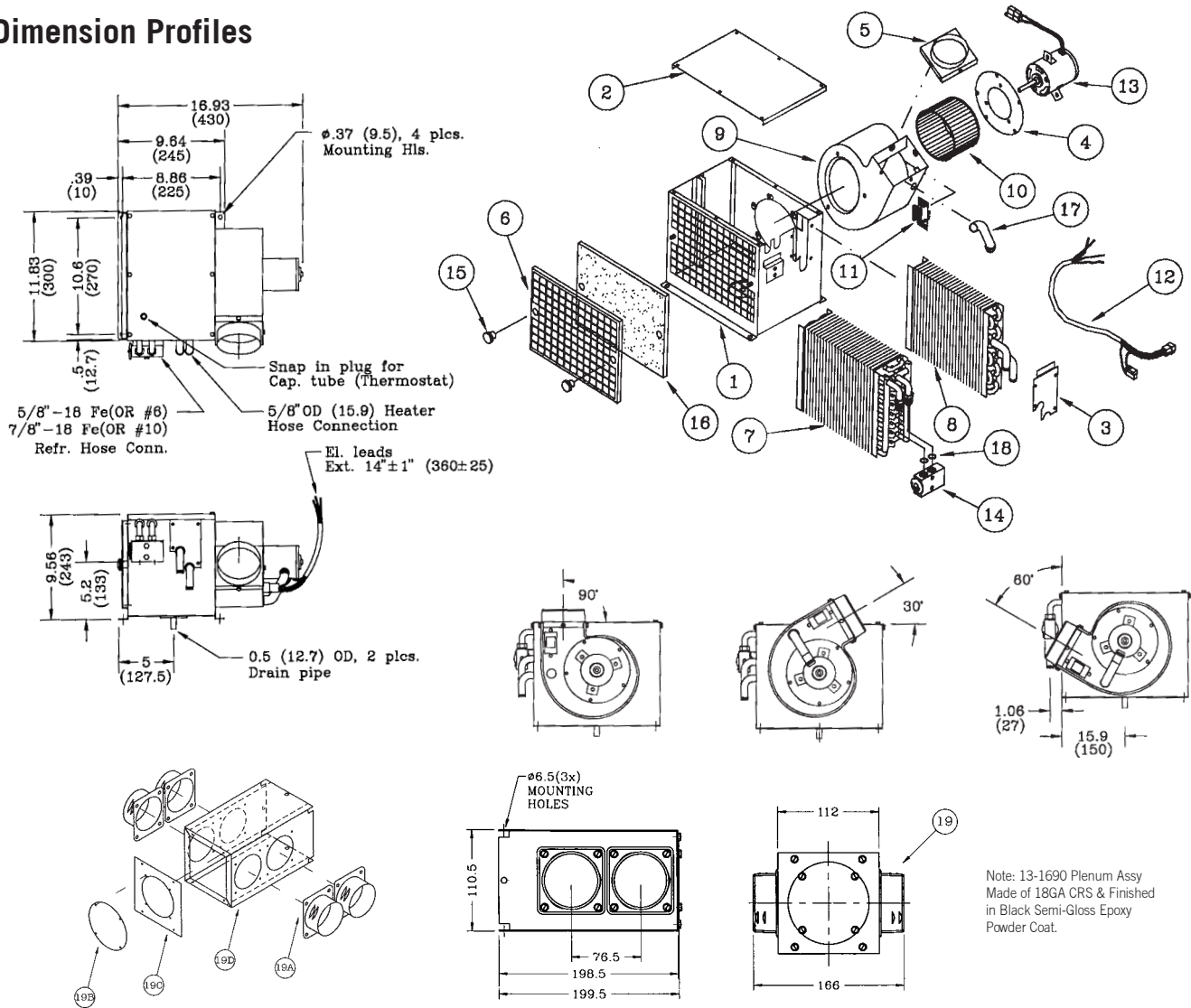
Part Descriptions: Specifications

Part No.		Specifications		
13-1601	Heater-AC 12V	Heating	-32500 Btu/hr (9525 W)	The unit is supplied w/o heater valve and de-icing thermostat, which have to be installed if needed.
13-1602	Heater-AC 24V	Cooling	-26500 Btu/hr (7770 W)	
13-1690	Plenum Assy. Inc. 19A -19D	Air Flow	-350 CFM (595 m ³ /h)	
		Current	-24 Amps/12V -12 Amps/24V	
		Weight	-26 lbs. (11.8kg)	

Features

The 316 is designed for behind the seat installations or for sleeper bunks. It is also designed to duct air around the cab. The blower can be rotated as shown in dimension profiles.

Dimension Profiles



Part Descriptions: Specifications

No.	Part No.	Description	No.	Part No.	Description	No.	Part No.	Description
1	24-2425	Casing	10	25-0098	Blower Wheel	16	26-0430	Air Filter
2	24-2426	Cover	11	25-0136	Resistor 12V	17	27-0105	Vent Tube
3	24-2427	Cover Plate		25-0552	Resistor 24V	18	27-0602	O-Ring #8
4	24-2431	Motor Plate	12	25-0538	Wiring Harness	19*	13-1690	Plenum Assy
5	24-2432	Hose Adapter	13	25-0675	Motor 12V	19A	23-0125	Hose Adapters 2.5"
6	24-2501	Filter Grill		25-0676	Motor 24V	19B	23-0006	Cover Plate
7	21-0395	Evaporator Coil	14	26-0190	Block Valve	19C	24-3317	Covers
8	22-0339	Heater Coil	15	26-0263	Knurled Knob	19D	24-3316	Plenum
9	25-0668	Blower Housing						

Item 19 is optional and has to be ordered seperately.

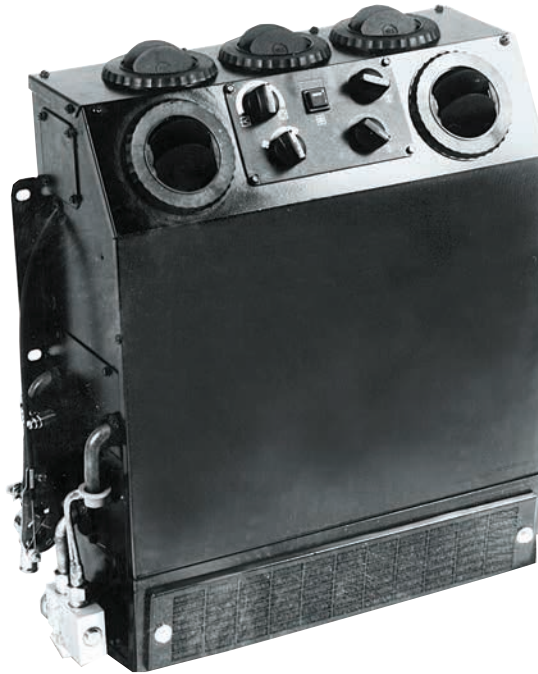
Features

The 316 is designed for behind the seat installations or for sleeper bunks. It is also designed to duct air around the cab. The blower can be rotated as shown in dimension profiles.

Heater-Air Conditioner **Model 320**

Note:

Switch is not as depicted in photo, has been changed to sealed rocker switch.



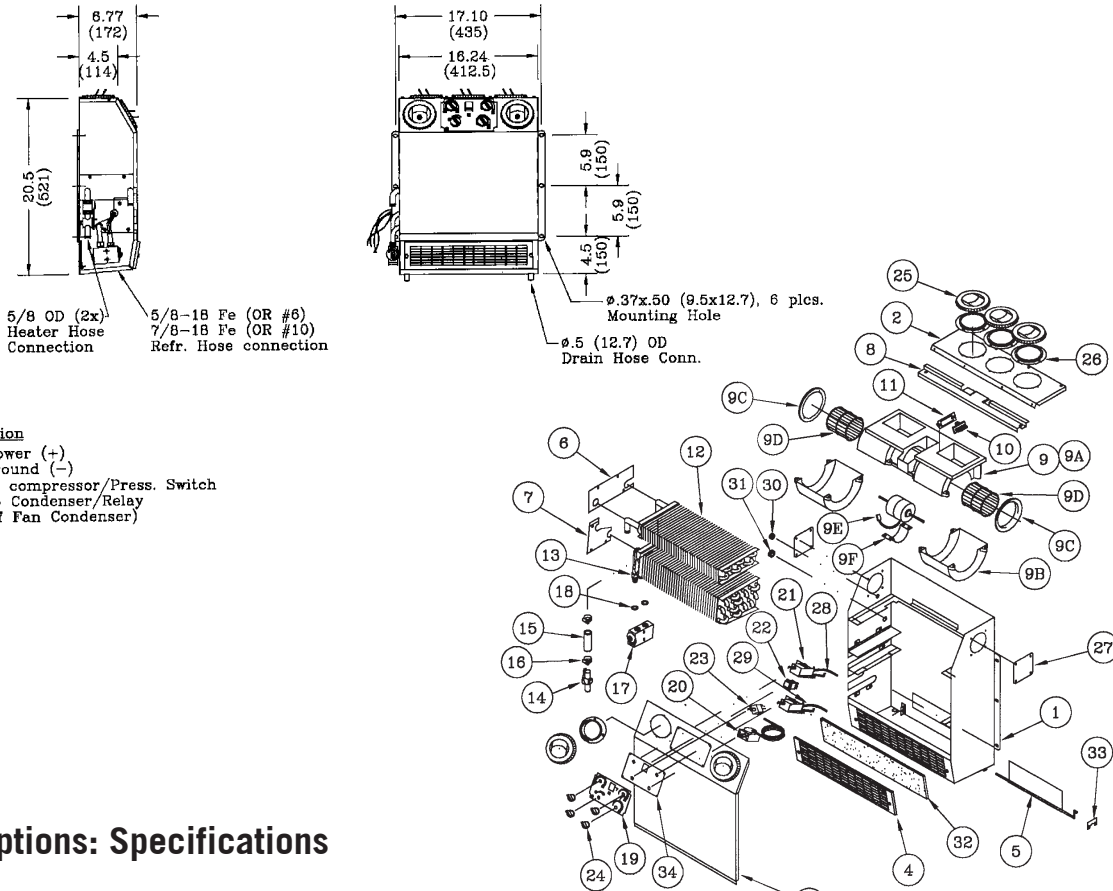
Part Descriptions: Specifications

Part No.		Specifications		
13-2021	Heater-AC 12V	Heating	-28000 Btu/hr (8200 W)	Made of 18GA (1.25mm) Cold Rolled Steel and finished in black semi-gloss epoxy powder coat.
13-2022	Heater-AC 24V	Cooling	-21000 Btu/hr (6150 W)	
13-2051	Air Conditioner 12V	Air Flow-	380 CFM (646 m ³ /h)	
13-2052	Air Conditioner 24V	Current	-18 Amps/13.5V -9 Amps/27V	
		Weight	-40 lbs. (18 kg)	
		3-Speed blower.		

Features

The 320 is a universal wall mounted unit that can handle the requirements of most off-road cabs. An outside filter kit and damper door can be added for outside air.

Dimension Profiles



5/8 OD (2x) Heater Hose Connection
 5/8-18 Fe (OR #6) 7/8-18 Fe (OR #10) Refr. Hose connection

El. connection
 Orange - Power (+)
 Black - Ground (-)
 White - To compressor/Press. Switch
 Blue - To Condenser/Relay (if Fan Condenser)

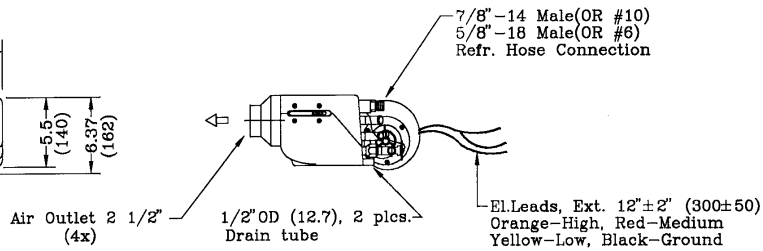
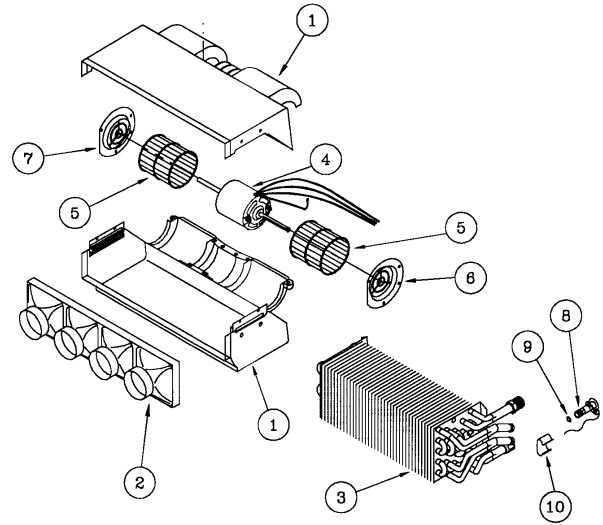
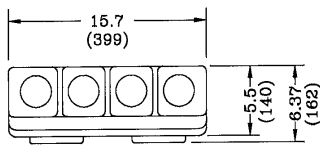
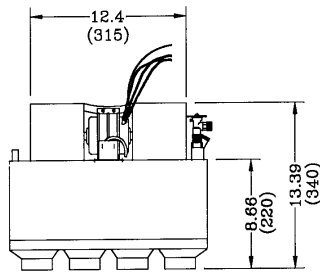
Part Descriptions: Specifications

No.	Part No.	Description	No.	Part No.	Description	No.	Part No.	Description
1	24-1182	Casing	9E	25-0665	Motor 12V	22	25-0631	Switch Push 12V
2	24-1183	Top Cover		25-0650	Motor 24V		25-0632	Switch Push 24V
3	24-1184	Front Cover	9F	25-0271	Motor Mount	23	25-0044	Blower Switch
4	24-1185	Filter Holder	10	25-0120	Resistor 12V	24	25-0435	Knob
5	24-1186	Flapper		25-0139	Resistor 24V	25	23-0005	Louver
6	24-1230	H.C. Cover Plate	11	24-0836	Mounting Plate	26	23-0048	Adapter
7	24-1243	E.C. Cover Plate	12	22-0207	Heater Coil	27	24-0320	Cover Plate
8	24-1187	Blower Bracket	13	21-0212	Evaporator Coil	28	26-0242	Bowden Cable
9	15-1503	Blower 12V	14	26-0025	Heater Valve	29	26-0243	Bowden Cable
	15-1502	Blower 24V	15	27-0225	Heater Hose 5/8"	30	28-0014	Grommet
9A	25-0048	Blower Housing	16	27-0059	Gear Clamp	31	28-0004	Grommet
9B	25-0348	Blower Housing Top	17	26-0190	Block Valve	32	26-0258	Filter
9C	25-0060	Venturi	18	27-0602	O-Ring #8	33	24-1188	Flapper Holder
9D	25-0200	Blower Wheel	19	28-0110	Overlay	34	24-1128	Control Plate
			20	25-0045	Thermostat	35	25-0436	Wiring Harness (Not Shown)
			21	26-0095	Rotary Control			

Features

The 320 is a universal wall mounted unit that can handle the requirements of most off-road cabs. An outside filter kit and damper door can be added for outside air.

Heater-Air Conditioner Model 309



Part Descriptions: Specifications

Part No.		No.	Part No.	Description	No.	Part No.	Description
13-0953	Heater-AC 12V	1	28-0016	Case	6	28-0019	Venturi (R)
13-0954	Heater-AC 24V	2	28-0006	Bezel	7	28-0020	Venturi (L)
		3	21-0012	Combo Coil	8	26-0162	Expansion Valve
		4	25-0070	Motor 12V	9	27-0602	O-Ring #8
		5	25-0076	Motor 24V	10	26-0006	Bulb Clamp
			25-0021	Blower Wheel			

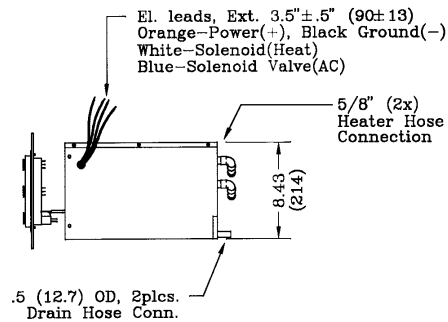
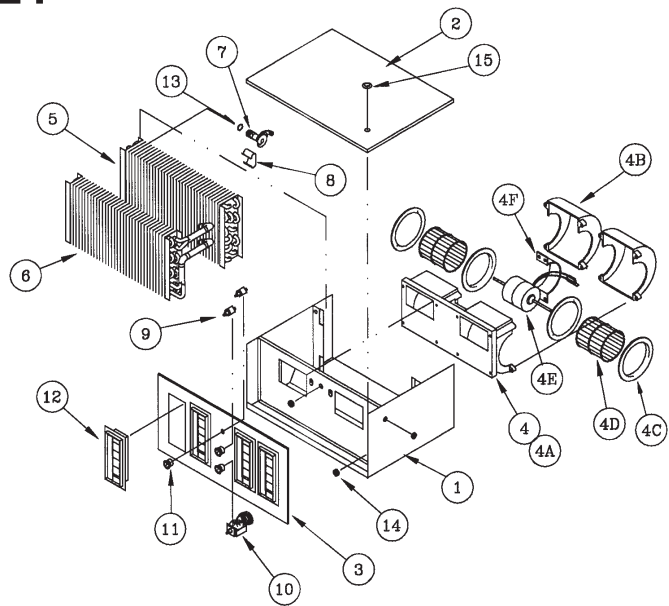
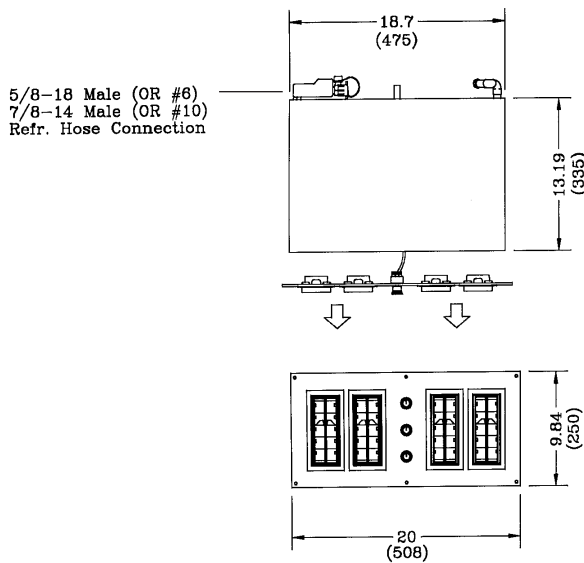
Specifications

Heating -20200 Btu/hr (5920 W)
 Cooling -15100 Btu/hr (4425 W)
 Air Flow -310 CFM (530 m³/h)
 Current -11 Amps/13.5V
 -5.5 Amps/27V
 Weight -10.5 lbs. (4.8 kg)
 3-Speed motor.
 Casing made of ABS.

Features

The 309 is a compact unit that can be ducted to deliver air flow where desired. Ideal for dash or compartment mounting.

Heater-Air Conditioner **Model 321**



Part Descriptions: Specifications

Part No.	No.	Part No.	Description	No.	Part No.	Description	
13-2155	Heater-AC 12V	1	24-0539	Casing	6	22-0130	Heater Coil
		2	24-0274	Cover	7	26-0162	Expansion Valve
		3	24-0275	Front	8	26-0006	Bulb Clamp
		4	15-1513	Blower 12V	9	25-0029	Switch
		4A	25-0048	Blower Housing	10	25-0045	Thermostat
		4B	25-0348	Housing Top	11	25-0072	Knob
		4C	25-0060	Venturi	12	23-0055	Louver
		4D	25-0200	Blower Wheel	13	27-0602	O-Ring #8
		4E	25-0053	Motor 12V	14	28-0004	Grommet
		4F	25-0271	Motor Mount	15	28-0021	Snap-in Plug
		5	21-0046	Evaporator Coil			

Specifications

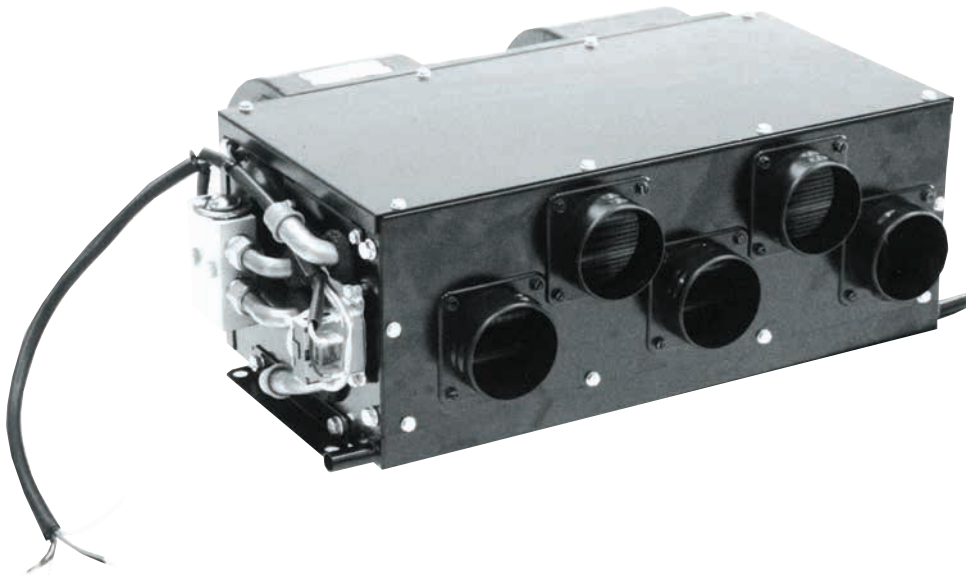
Heating	-40000 Btu/hr (11720 W)
Cooling	-27300 Btu/hr (8000 W)
Air Flow	-450 CFM (765 m ³ /h)
Current	-17 Amps/12V
Weight	-31 lbs. (14 kg)

Made of 18GA (1.25mm) Cold Rolled Steel and finished in black semi-gloss epoxy powder coat.

Features

The 321 was designed for ambulance installation. It can be used for any deck mounting application. The high capacity of the 321 makes this unit ideal for ambulance and large cabs.

Heater-Air Conditioner **Model 325**



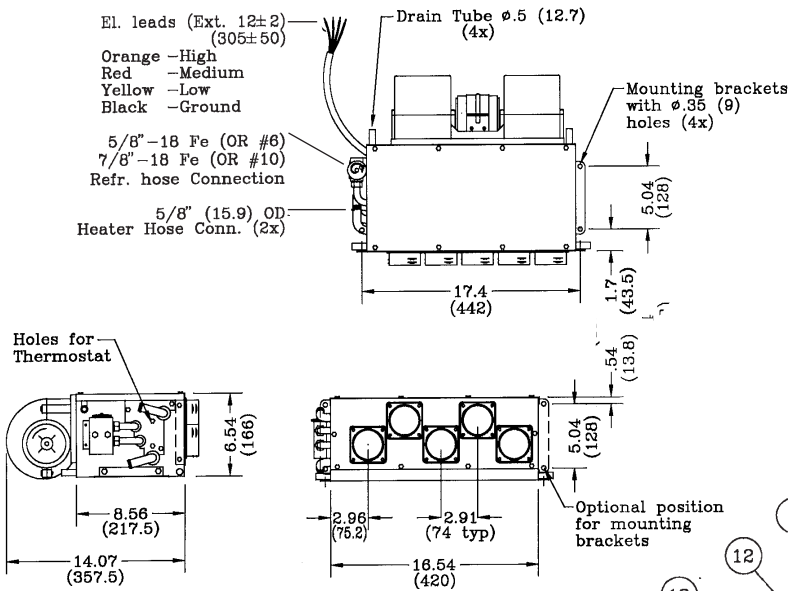
Part Descriptions: Specifications

Part No.		Specifications	
13-2503	Heater-AC 12V	Heating	-36000 Btu/hr(10500 W)
13-2504	Heater-AC 24V	Cooling	-28500 Btu/hr (8350 W)
		Air Flow	-450 CFM (765 m ³ /h)
		Current	-16 Amps/13.5V -8 Amps/27V
		Weight	-19 lbs. (8.6 kg)
			Permanent magnet motor with ball bearings. Casing made of 18GA (1.25mm) Cold Rolled Steel and finished in black semi-gloss powder coat.

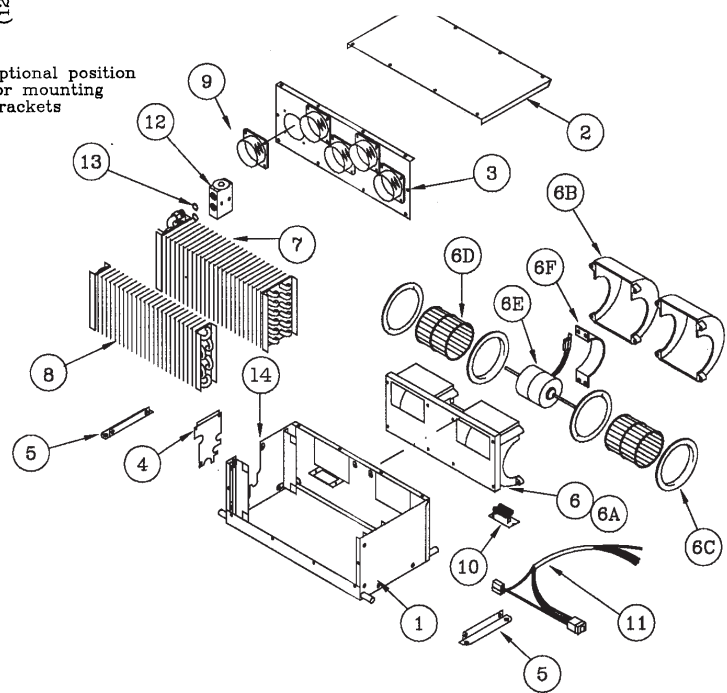
Features

The 325 is a universal unit that fits all ducting requirements.

Dimension Profiles



Note:
This Unit is supplied w/o Heater Valve and De-icing Thermostat which have to be installed if needed.



Part Descriptions: Specifications

No.	Part No.	Description	No.	Part No.	Description	No.	Part No.	Description
1	24-0027	Casing	6B	25-0348	Housing Top	9	23-0125	Hose Adapter 2.5"
2	24-0028	Cover	6C	25-0060	Venturi	10	25-0136	Resistor 12V
3	24-0013	Cover	6D	25-0200	Blower Wheel		25-0552	Resistor 24V
4	24-0017	Coil Cover (H)	6E	25-0645	Motor 12V	11	25-0671	Wiring Harness
5	24-0033	Mounting Bracket		25-0650	Motor 24V	12	26-0190	Block Valve
6	15-1501	Blower 12V	6F	25-0271	Motor Mount	13	27-0602	O-Ring #8
	15-1502	Blower 24V	7	21-0091	Evaporator Coil	14	25-0069	Thermostat
6A	25-0048	Blower Housing	8	22-0348	Heater Coil			

Features

The 325 is a universal unit that fits all ducting requirements.

Heater-Air Conditioner **Model 330**

Note:

Switch is not as depicted in photo, has been changed to sealed rocker switch.



Part Descriptions: Specifications

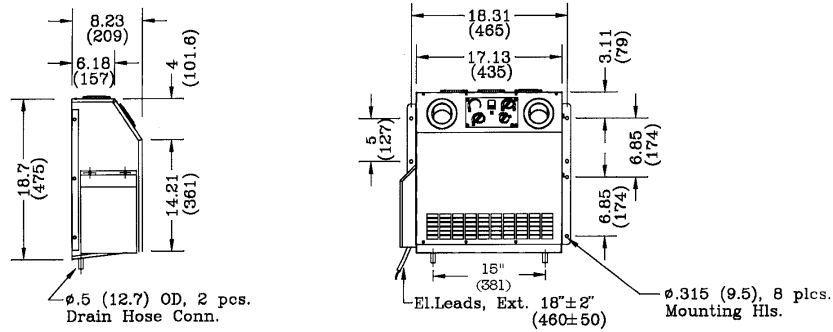
Part No.	Specifications		
13-3061	Heater-AC 12V	Heating	-42200 Btu/hr(12370 W)
13-3062	Heater-AC 24V	Cooling	-28500 Btu/hr (8350 W)
13-3063	Air Conditioner 12V	Air Flow	-450 CFM (765 m ³ /h)
13-3064	Air Conditioner 24V	Current	-22 Amps/13.5V
13-3067	Heater 12V		-11 Amps/27V
		Weight	-38 lbs. (17.2 kg)

Permanent magnet motor with long life brushes.
3-Speed blower.
Made of 18GA (1.25mm) Cold Rolled Steel and finished in black semi-gloss epoxy powder coat.
Items 31-35 are optional and have to be ordered separately

Features

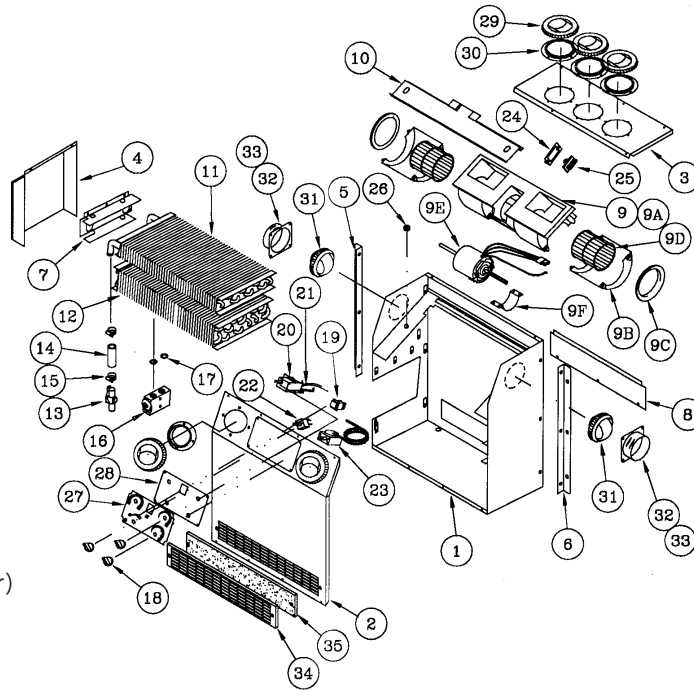
Although similar in design and function, the 330 is a larger capacity unit than the 320. It is ideal for street sweepers and large off-road cabs. Outside air can be achieved by adding a filter kit.

Dimension Profiles



Note:
 5/8-18 Male (OR #6)
 7/8-14 Male (OR #10)
 Refr. Hose Conn.
 5/8" OD Heater Hose Conn.
 All behind protection cover.

Electrical Connections
 Orange - Power (+)
 Black - Ground (-)
 White - To Compressor/Pressure Switch
 Blue - To Condensor/Relay (if fan condensor)



Part Descriptions: Specifications

No.	Part No.	Description	No.	Part No.	Description	No.	Part No.	Description
1	24-1157	Casing	9F	24-0271	Motor Mount	23	25-0045	Thermostat
2	24-1158	Front Cover	10	24-1160	Blower Mount	24	24-0836	Resistor Bracket
3	24-1159	Top Cover	11	22-0078	Heater Coil	25	25-0120	Resistor 12V
4	24-0205	Protection Cover	12	21-0063	Evaporator Coil		25-0139	Resistor 24V
5	24-0290	Mounting Bracket (L)	13	26-0025	Heater Valve	26	28-0014	Grommet
6	24-0279	Mounting Bracket (R)	14	27-0225	Heater Hose 5/8"	27	28-0110	Overlay
7	24-0242	Coil Bracket	15	27-0059	Gear Clamp	28	24-1128	Control Plate
8	24-0291	Fresh Air Cover	16	26-0190	Block Valve	29	23-0005	Louver
9	15-1503	Blower 12V	17	27-0602	O-Ring #8	30*	23-0048	Adapter
	15-1502	Blower 24V	18	25-0435	Knob	31*	23-0087	Ball Louver
9A	25-0048	Blower Housing	19	25-0631	Switch Push 12V	32*	23-0110	Hose Adapter 2"
9B	25-0348	Blower Housing Top		25-0632	Switch Push 24V	33*	23-0125	Hose Adapter 2.5"
9C	25-0060	Venturi	20	26-0095	Rotary Control	34*	24-2018	Grill
9D	25-0200	Blower Wheel	21	26-0320	Bowden Cable	35*	26-0425	Air Filter
9E	25-0665	Motor 12V	22	25-0044	Blower Switch	36	25-0436	Wiring Harness (Not Shown)
	25-0650	Motor 24V						

Heater-Air Conditioner **Model 344**

Note:

Switch is not as depicted in photo, has been changed to sealed rocker switch.



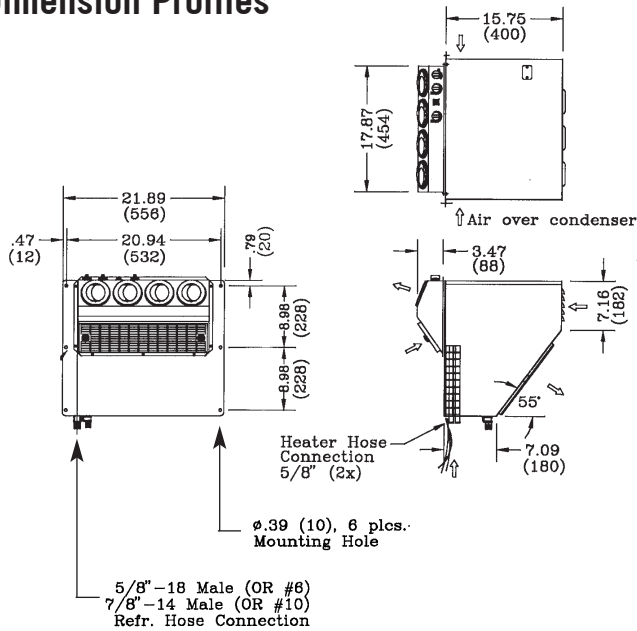
Part Descriptions: Specifications

Part No.		Specifications		
13-4401	Heater-AC 12V	Heating	-34000 Btu/hr (9960 W)	Casing made of 16GA (1.5mm) Cold Rolled Steel and finished in black semi-gloss epoxy powder coat.
13-4402	Heater-AC 24V	Cooling	-17000 Btu/hr (4980 W)	
		Air Flow	-265 CFM (450 m ³ /h)	
		Current	-33.4 Amps/3.5V	
			-16.7 Amps/27V	
		Weight	-77 lbs. (35 kg)	

Features

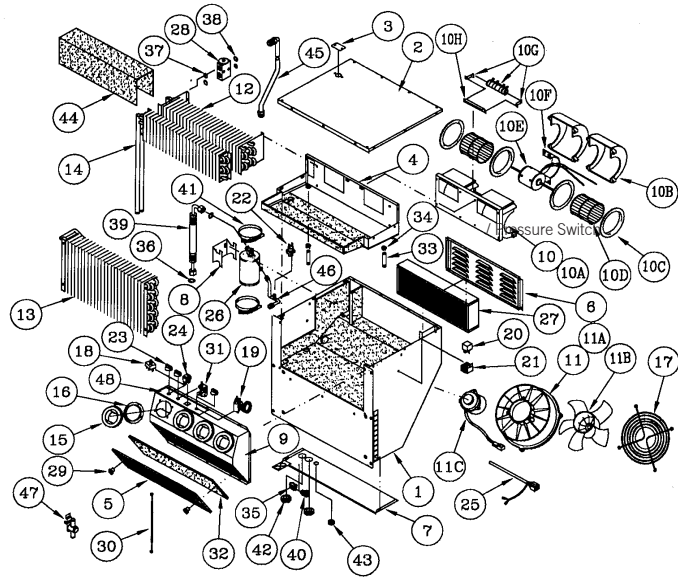
The 344 is a unit that has the condenser mounted in the same compartment as the heater-air conditioner. This unit is mounted on the side of any cab and blows air into a louver console. Outside air is standard.

Dimension Profiles



El.Connection

Orange - Power (+)
 Black - Ground (-)
 White - To Compressor
 Wiring Harness Ext. 3.5" ± .5"



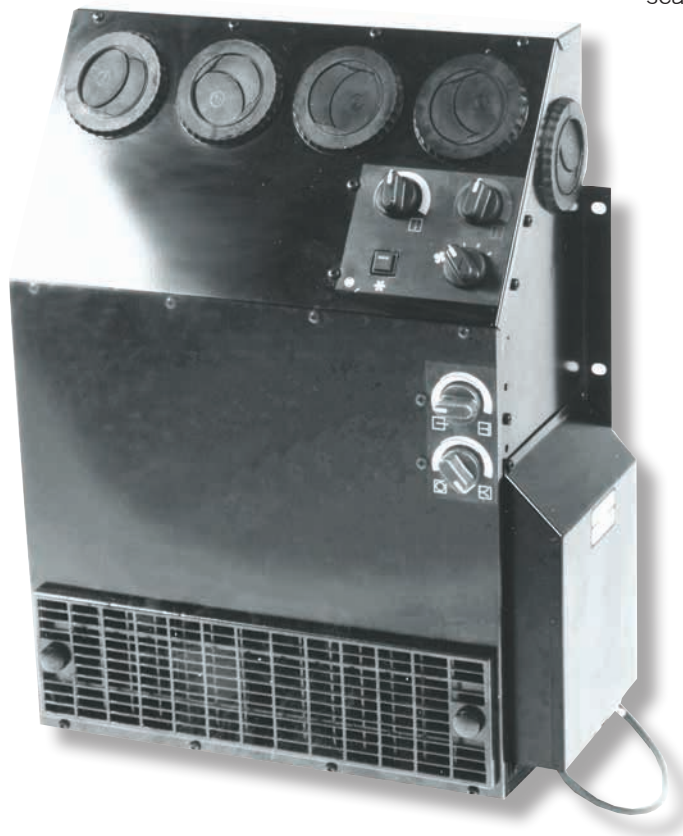
Part Descriptions: Specifications

No.	Part No.	Description	No.	Part No.	Description	No.	Part No.	Description
1	24-2229	Casing Assy.	11	15-7512	Fan Assy. 24V	27	26-0041	Air Filter
2	24-2230	Cover Assy.	11A	25-0577	Venturi	28	26-0190	Block Valve
3	24-1919	Sight Glass Cover	11B	25-0579	Fan	29	26-0263	Knurled Knob
4	24-2231	Drain Pan Assy.	11C	25-0621	Motor 12V	30	26-0347	Bowden Cable
5	24-1921	Recirc. Grill		25-0622	Motor 24V	31	26-0350	Rotary Control
6	24-1922	Filter Cover	12	21-0318	Evaporator Coil	32	26-0374	Air Filter (Recirc.)
7	24-1923	Bottom Plate	13	21-0319	Condenser Coil	33	27-0030	Drain Hose
8	24-1924	R/D Bracket	14	22-0292	Heater Coil	34	27-0091	Drain Hose Clamp
9	24-2010	Plenum	15	23-0005	Louver	35	27-0502	Clamp
10	15-1561	Blower 12V	16	23-0048	Adapter	36	27-0601	O-Ring #6
	15-1562	Blower 24V	17	23-0148	Finger Guard	37	27-0602	O-Ring #8
10A	25-0048	Blower Housing	18	25-0044	Blower Switch	38	27-0603	O-Ring #10
10B	25-0348	Blower Top	19	25-0045	Thermostat	39	27-1107	Refr. Hose Assy. #6
10C	25-0060	Venturi	20	25-0251	Relay 12V	40	27-1108	P-Clamp #8
10D	25-0200	Blower Wheel		25-0219	Relay 24V	41	27-1121	Gear Clamp
10E	25-0655	Motor 12V	21	25-0221	Socket/Relay	42	28-0005	Grommet
	25-0660	Motor 24V	22	25-0343	Pressure Switch	43	28-0045	Grommet
10F	25-0271	Motor Mount	23	25-0435	Knob	44	28-0210	Reticulated Foam
10G	25-0601	Resistor 12V	24	25-0631	Switch Push 12V	45	34-0164	Copper Tube Assy.
	25-0602	Resistor 24V		25-0632	Switch Push 24V	46	34-0167	Copper Tube Assy.
10H	29-0130	Resistor Bracket	25	25-1015	Wiring Harness	47	26-0025	Heater Valve
11	15-7511	Fan Assy. 12V	26	26-0018	Drier Receiver	48	28-0191	Overlay

Heater-Air Conditioner **Model 345**

Note:

Switch is not as depicted in photo, has been changed to sealed rocker switch.



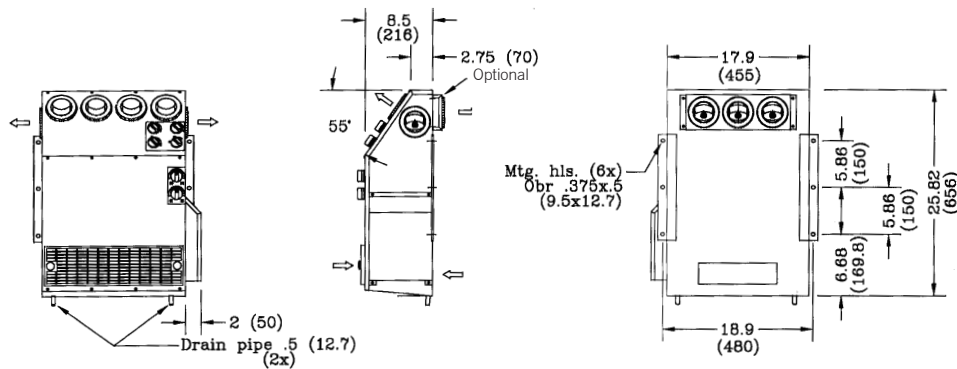
Part Descriptions: Specifications

Part No.		Specifications		
13-4503	Heater-AC 12V	Heating	-46000 Btu/hr(13480 W)	Made of 18GA (1.25mm) Cold Rolled Steel and finished in black semi-gloss "texture" epoxy powdercoat. 13-4595 Rear Outlet Flapper Kit includes 1 piece 26-0350, 25-0581, 26-0421 and 26-0079 with hardware. Kit is optional and has to be ordered separately
13-4504	Heater-AC 24V	Cooling	-33000 Btu/hr (9670 W)	
13-4590	Air Plenum Assy.	Air Flow	-450 CFM (765 m ³ /h)	
13-4595	Rear Outlet Flapper Kit	Current	-22 Amps/13.5V -11 Amps/27V	
		Weight	-48 lbs. (22 kg)	

Features

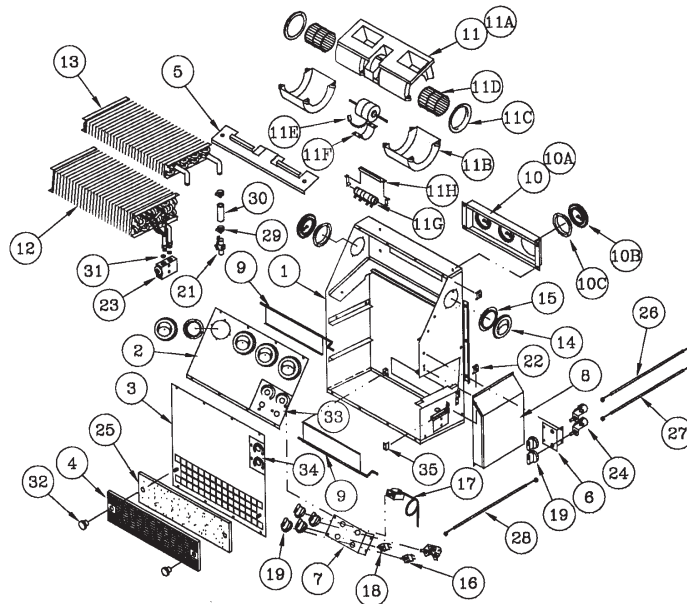
The 345 is an excellent choice for armored cars and large cabs. Its many options include outside air, rear air damper control, and side air louvers.

Dimension Profiles



El. Connection

Orange - Power (+)
 Black - Ground (-)
 White - To Compressor/Press. Switch
 Blue - To Condenser/Relay
 (if Fan Condenser)



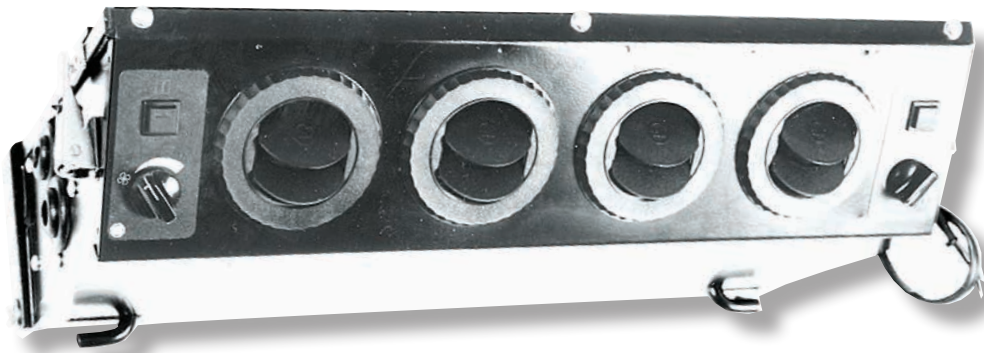
Part Descriptions: Specifications

No.	Part No.	Description	No.	Part No.	Description	No.	Part No.	Description
1	24-2235	Casing	11C	25-0060	Venturi	21	26-0025	Heater Valve
2	24-2236	Face Cover	11D	25-0200	Blower Wheel	22	26-0079	Cable Clamp
3	24-2237	Front Cover	11E	25-0228	Motor 12V	23	26-0190	Block Valve
4	24-2238	Grill		25-0298	Motor 24V	24	26-0350	Rotary Control
5	24-2239	Blower Support	11F	25-0271	Motor Mount	25	26-0400	Air Filter
6	24-2240	Control Bracket	11G	25-0601	Resistor 12V	26	26-0421	Bowden Cable (R/A-Option)
7	24-2241	Control Bracket		25-0602	Resistor 24V			
8	24-2242	Protection Cover	11H	29-0130	Resistor Bracket	27	26-0422	Bowden Cable (F/A)
9	24-2243	Flapper Door	12	21-0362	Evaporator Coil	28	26-0423	Bowden Cable (Heat)
10	13-4590	Air Plenum Assy.	13	22-0318	Heater Coil	29	27-0059	Gear Clamp
10A	24-2447	Plenum	14	23-0005	Louver	30	27-0225	Heater Hose
10B	23-0005	Louver	15	23-0048	Adapter	31	27-0602	O-Ring #8
10C	23-0048	Adapter	16	25-0044	Blower Switch	32	26-0263	Knurled Knob
11	15-1551	Blower 12V	17	25-0118	Thermostat Assy.	33	28-0212	Overlay
	15-1552	Blower 24V	18	25-0307	Switch	34	28-0213	Overlay
11A	25-0048	Blower Housing	19	25-0581	Knob	35	24-2274	Mounting Bracket
11B	25-0348	Housing Top	20	25-0669	Wiring Harness (Not Shown)			

Heater-Air Conditioner **Model 346**

Note:

Switch is not as depicted in photo, has been changed to sealed rocker switch.



Part Descriptions: Specifications

Part No.		Specifications	
13-4603	Heater-AC 12V	Heating	- 17500 Btu/hr (5130 W)
13-4604	Heater-AC 24V	Cooling	- 17300 Btu/hr (5070 W) -AC
13-4623	Air Conditioner 12V	only	
13-4624	Air Conditioner 24V		- 14250 Btu/hr (4180 W) - Heater-AC
		Air Flow	- 250 CFM (425 m ³ /h)
		Current	- 12 Amps/13.5 V
			- 6 Amps/27V
		Weight	- 33 lbs. (15 kg)

3-Speed motor.
Made of 18GA (1.25mm) Cold Rolled Steel finished in black textured epoxy.

* Only for Heat/AC version.

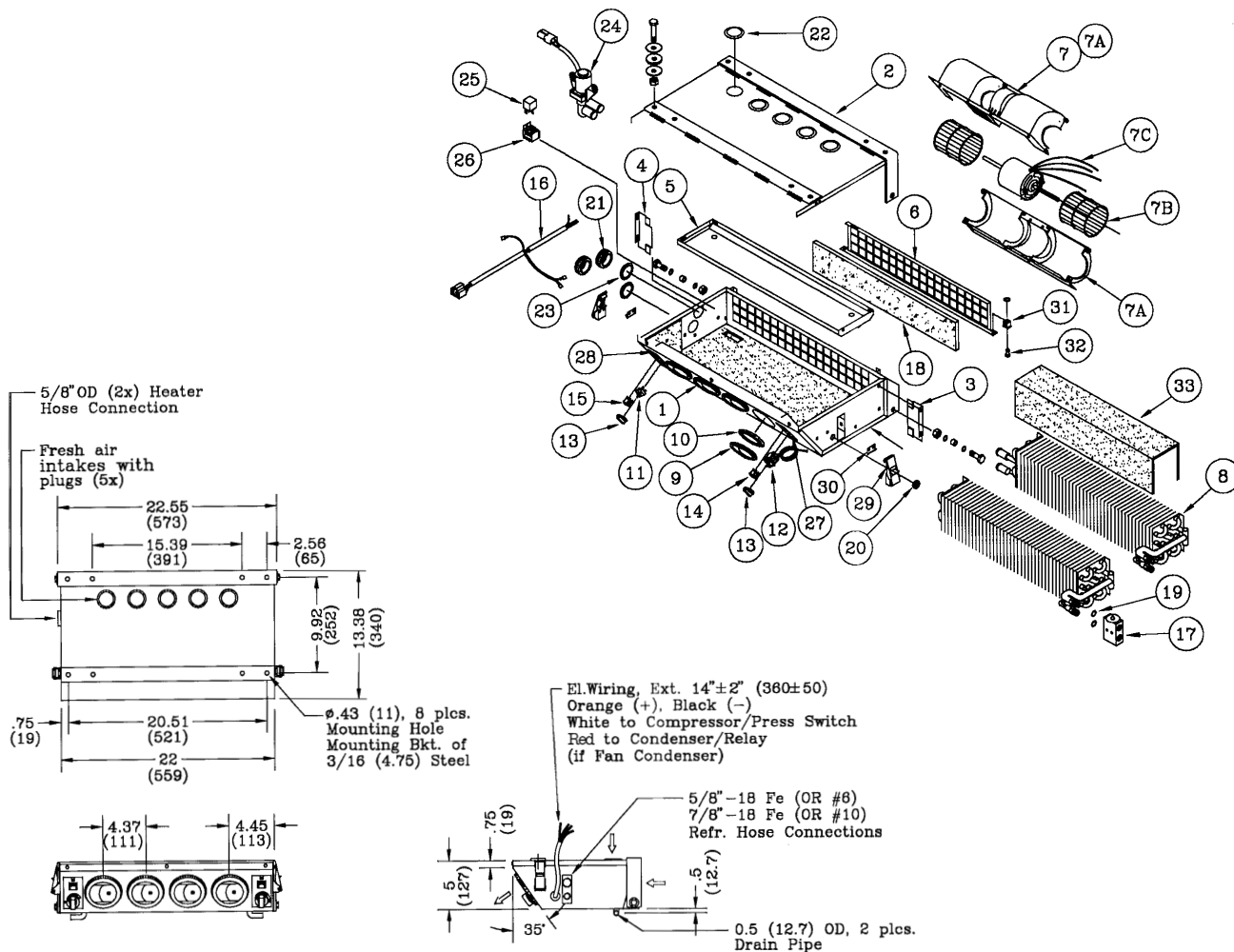
** Only for AC version

Features

The 346 is a compact overhead with a heater option. Its compact design makes it an excellent choice for many off-road cabs.

The convenient swing-down unit makes for easy service.

Dimension Profiles



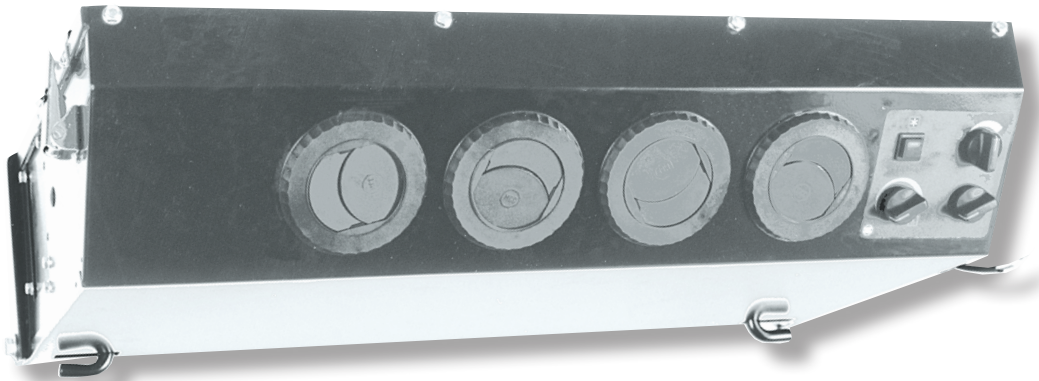
Part Descriptions: Specifications

No.	Part No.	Description	No.	Part No.	Description	No.	Part No.	Description
1	24-1991	Casing Assy.	10	23-0048	Adapter	22	28-0012	Snap-in Plug
2	24-1992	Cover Assy.	11	25-0029	Blower Switch	23	28-0013**	Snap-in Plug
3	24-1979	Coil Bracket	12	25-0118	Thermostat	24	26-0348	Solenoid Valve 12V
4	24-1980	Coil Bracket	13	25-0435	Knob	26-0194	Solenoid Valve 24V	
5	24-1981	Drain Pan	14	25-0631	Switch Push 12V(AC)	25	25-0251	Relay 12V
6	24-1982	Filter Holder		25-0632	Switch Push 24V(AC)	25-0219	Relay 24V	
7	15-0533	Blower 12V	15	25-0633*	Switch Push 12V (Heat)	26	25-0221	Socket Relay
	15-0534	Blower 24V		25-0634*	Switch Push 24V (Heat)	27	28-0173	Overlay
7A	25-0017	Blower Housing	16	25-0636**	Wiring Harness	28	28-0174	Overlay
7B	25-0021	Blower Wheel		25-0637*	Wiring Harness	29	29-0221	Latch
7C	25-0643	Motor 12V	17	26-0190	Block Valve	30	29-0222	Latch Hook
	25-0644	Motor 24V	18	26-0375	Air Filter	31	29-0075	Receptacle
8	21-0315**	Evaporator Coil Combo Coil (HE)	19	27-0602	O-Ring #8	32	29-0076	Stud, Oval Slotted
9	21-0314*	Louver	20	28-0004	Grommet		29-0077	Retainer
	23-0005		21	28-0005*	Grommet	33	28-0185	Reticulated Foam

Heater-Air Conditioner **Model 347**

Note:

Switch is not as depicted in photo, has been changed to sealed rocker switch.



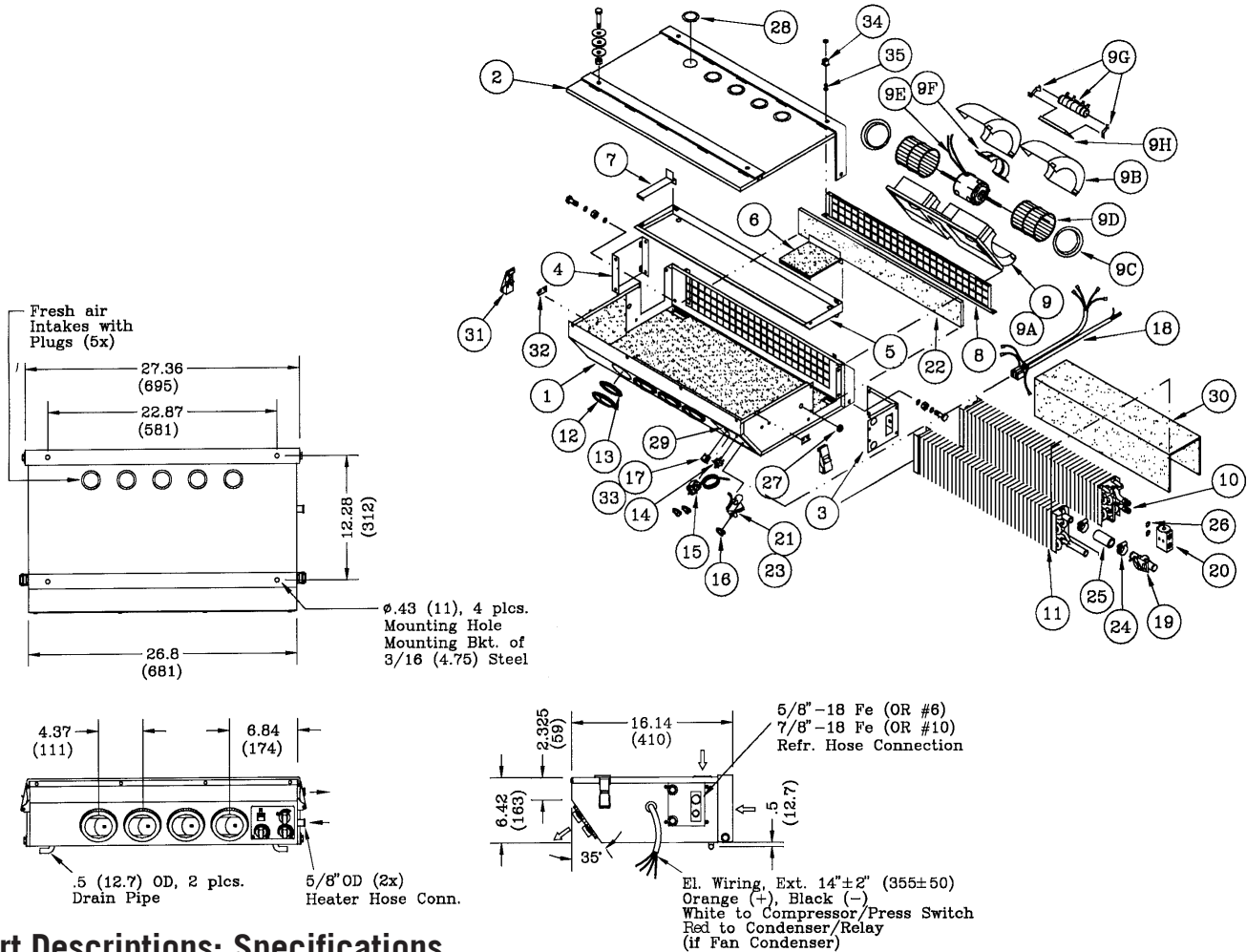
Part Descriptions: Specifications

Part No.		Specifications		
13-4703	Heater-AC 12V	Heating	-40000 Btu/hr (11720 W)	3-Speed motor. Made of 18GA (1.25mm) Cold Rolled Steel and finished in black textured epoxy powder coat. * Only for Heat/AC version. Heater and Evaporator Coil can be changed to have opposite connections.
13-4704	Heater-AC 24V	Cooling	-21000 Btu/hr (6150 W)	
13-4723	Air Conditioner 12V	Air Flow	-450 CFM (765 m ³ /h)	
13-4724	Air Conditioner 24V	Current	-23 Amps/13.5V	
13-4795	Heater Conv. Kit	Current	-11.5 Amps/27V	
		Weight	-49 lbs. (22.2 kg)	

Features

The 347 is a larger capacity version of the 346. The coils can be flipped to either side of the unit to accommodate different installations. Outside air is available. This high capacity unit will handle most off-road cabs.

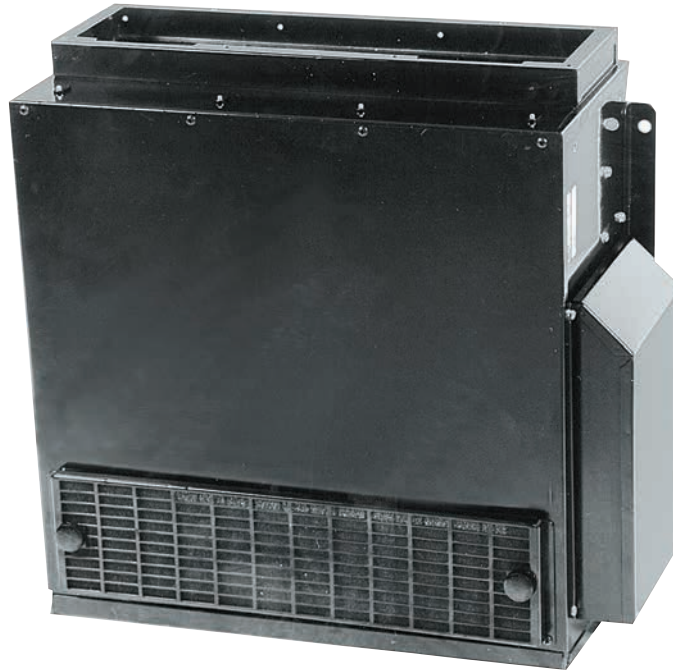
Dimension Profiles



Part Descriptions: Specifications

No.	Part No.	Description	No.	Part No.	Description	No.	Part No.	Description
1	24-2215	Casing Assy.	9F	25-0271	Motor Mount	21	26-0350*	Rotary Control
2	24-2216	Cover Assy.	9G	25-0601	Resistor 12V	22	26-0376	Air Filter
3	24-1956	Coil Bracket		25-0602	Resistor 24V	23	26-0377*	Bowden Cable
4	24-1957	Coil Bracket	9H	29-0130	Resistor Bracket	24	27-0059*	Gear Clamp
5	24-1958	Drain Pan	10	21-0313	Evaporator Coil	25	27-0225*	Heater Hose
6	24-2228	Coil Support Assy.	11	22-0290*	Heater Coil	26	27-0602	5/8"(HD)
7	24-1960	Coil Support	12	23-0005	Louver	27	28-0004	O-Ring #8
8	24-1961	Filter Holder	13	23-0048	Adapter	28	28-0012	Grommet
9	15-1561	Blower 12V	14	25-0044	Blower Switch	29	28-0172	Snap-in Plug
	15-1562	Blower 24V	15	25-0118	Thermostat	30	28-0187	Overlay
9A	25-0048	Blower Housing	16	25-0435	Knob		28-0189*	Reticulated Foam
9B	25-0348	Housing Top	17	25-0631	Switch Push 12V	31	29-0221	Reticulated Foam
9C	25-0060	Venturi		25-0632	Switch Push 24V	32	29-0222	Latch
9D	25-0200	Blower Wheel	18	25-0638	Wiring Harness	33	29-0075	Latch Hook
9E	25-0655	Motor 12V	19	26-0025*	Heater Valve	34	29-0076	Receptacle
	25-0660	Motor 24V	20	26-0190	Block Valve		29-0077	Stud, Oval Slotted Retainer

Heater-Air Conditioner **Model 353**



Part Descriptions: Specifications

Part No.		Specifications	
13-5303	Heater-AC 12V	Heating	-46000 Btu/hr (13480 W)
13-5304	Heater-AC 24Vt	Cooling	-34000 Btu/hr (9970 W)
		Air Flow	-450 CFM (765 m ³ /h)
		Current	-10.2 Amps/27V
			-20.4 Amps/13.5V
		Weight	-44 lbs. (22 kg)

Made of 18GA (1.25mm) Cold Rolled Steel and finished in black epoxy powder coat. Dim. marked (*) are inlet and outlet openings. **Items 18 to 28 are optional and have to be ordered separately.**

Features

The 353 was designed for log loader applications in Western North America. It is available in many different hose adapter options.

It also has a 32" cover option for cab wall mount applications.

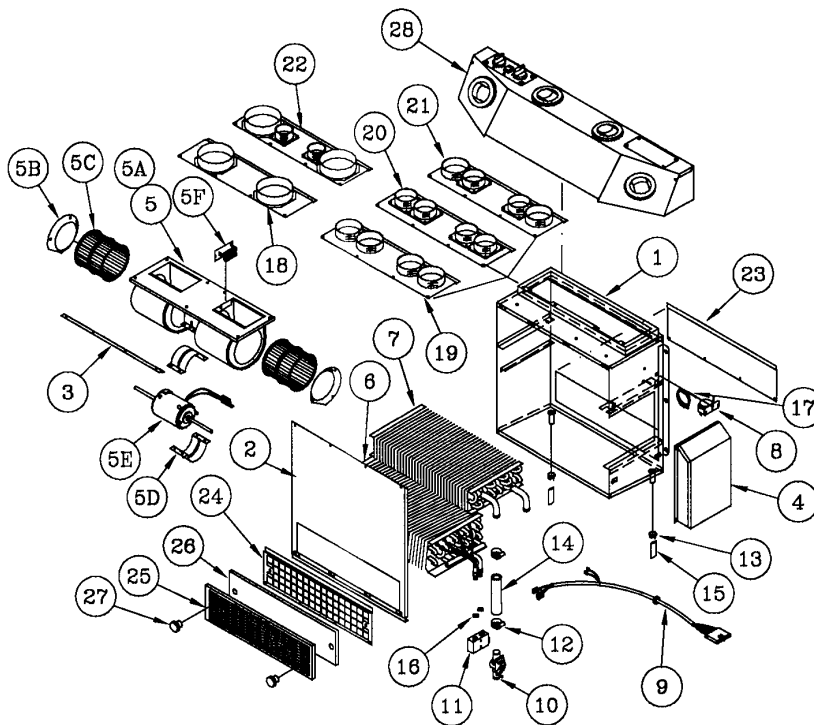
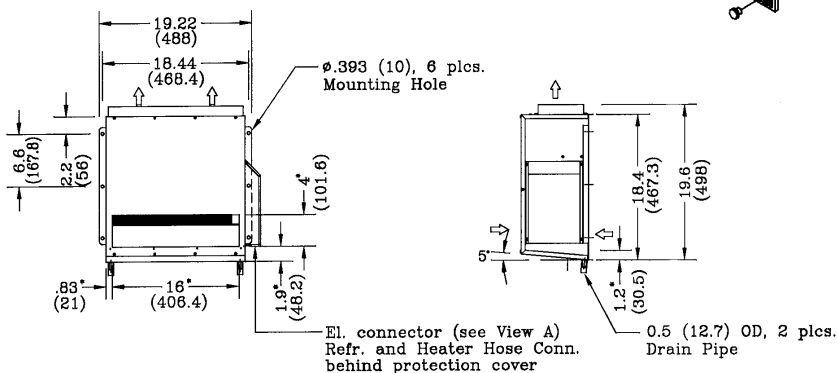
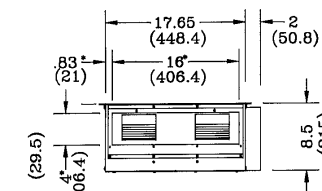
Dimension Profiles



VIEW A

- A - Orange - High speed
- B - Red - Medium speed
- C - Yellow - Low speed
- D - Black - Ground
- E - White - From AC On-Off Switch
- F - White - To compressor (over H/L switch)

Weather pack 6-Way Male Connector
 #12010975 (MCC #31-1046) with terminal
 #12024582 (MCC #31-1039) and seal
 #12010293 (MCC #31-1024)



Part Descriptions: Specifications

No.	Part No.	Description	No.	Part No.	Description	No.	Part No.	Description
1	24-2204	Casing	6	21-0337	Evaporator Coil	18	23-0160	HA Plate (2x4")
2	24-2205	Cover	7	22-0299	Heater Coil	19	23-0161	HA Plate (4x3")
3	24-2206	Blower Mount	8	25-0069	Thermostat	20	23-0162	HA Plate (4x2 1/2")
4	24-2207	Protection Cover	9	25-0661	Wiring Harness	21	23-0165	HA Plate (2x3"/2x2 1/2")
5	15-2033	Blower 12V	10	26-0025	Heater Control Valve	22	23-0167	1/2")
	15-2034	Blower 24V	11	26-0190	Block Valve	23	24-1436	HA Plate (2x4"/2x2")
5A	25-0159	Blower Housing	12	27-0059	Gear Clamp	24	24-2212	Cover Plate
5B	25-0164	Venturi	13	27-0091	Drain Hose Clamp	25	24-1524	Grill Support
5C	25-0047	Blower Wheel	14	27-0225	Heater Hose	26	26-0412	Grill
5D	24-0234	Motor Mount	15	27-0421	Drain Valve	27	26-0263	Air Filter
5E	25-0265	Motor 12V	16	27-0602	O-Ring #8	28	13-5391	Knurled Knob
	25-0270	Motor 24V	17	28-0031	PVC Hose		13-5392	Plenum 12V
5F	25-0136	Resistor 12V						Plenum 24V
	25-0552	Resistor 24V						

Heater-Air Conditioner **Model 360**



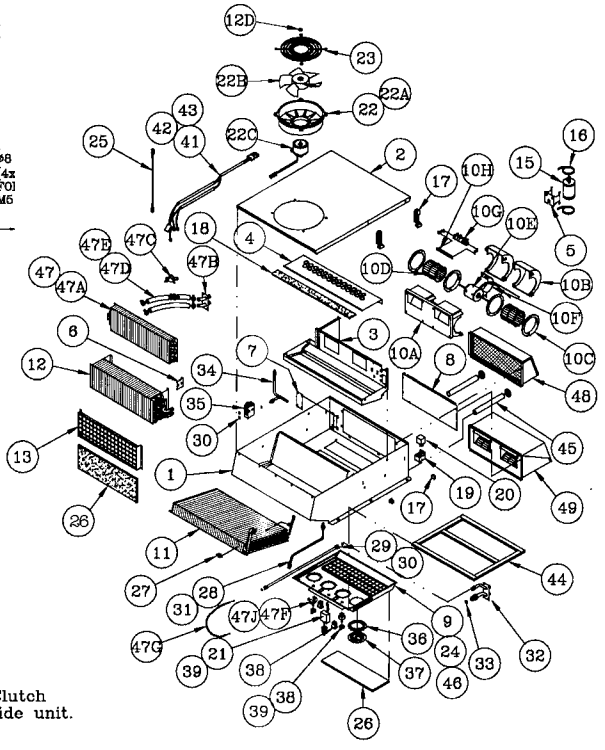
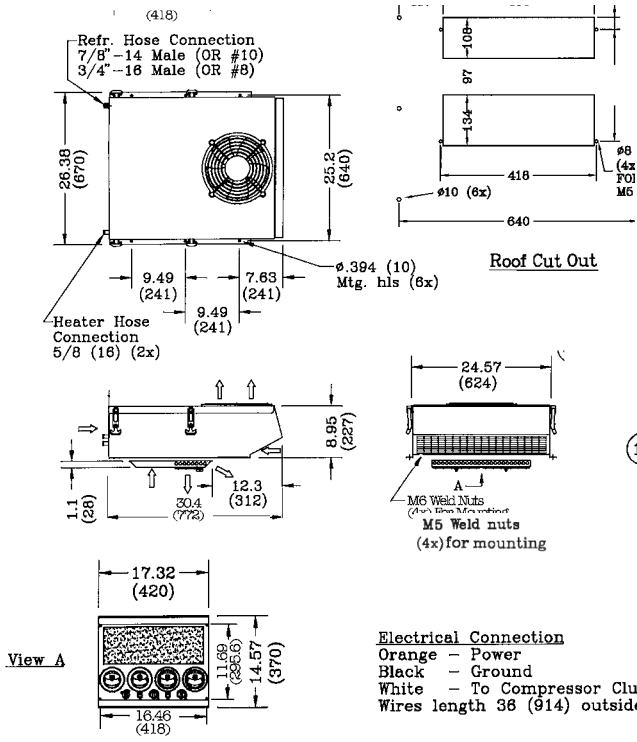
Part Descriptions: Specifications

Part No.		Specifications		
13-6023	Air Conditioner 12V	Heating	-46000 Btu/hr (13500 W)	Made of 14 (1.5mm) and 16 (1.5mm) GA Cold Rolled Steel and finished in grey semi-gloss epoxy powder coat. Items 47 to 49 are optional and have to be ordered separately.
13-6024	Air Conditioner 24V	Cooling	-27000 Btu/hr (7900 W)	
13-6095	Heater Conv. Kit	Air Flow	-400 CFM (680 m ³ /h)	
		Current	-40 Amps/12V -20 Amps/24V	
		Weight	-77 lbs. (35 kg)	

Features

The 360 was designed to offer a variety of installation options. It can be set up with an outside air or positive fan presswinger. It is also available with heat. A water and corrosion resistant condenser ensures years of service. Four nylon latches allow easy service access.

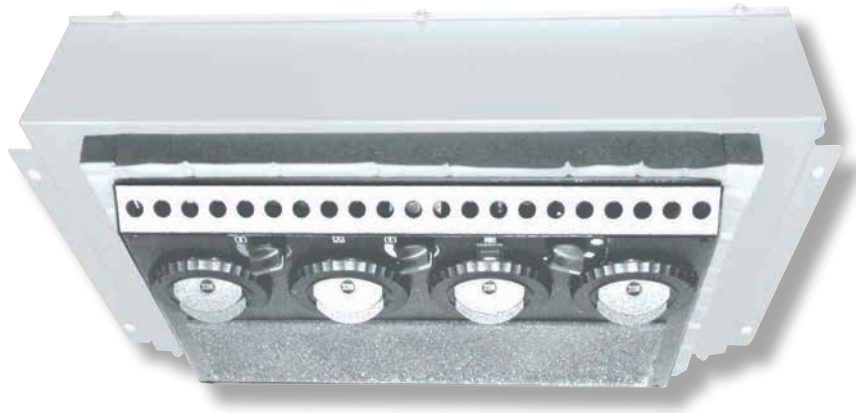
Dimension Profiles



Part Descriptions: Specifications

No.	Part No.	Description	No.	Part No.	Description	No.	Part No.	Description
1	24-2219	Casing Assy.	17	29-0236	Draw Latch Assy.	37	23-0005	Louver
2	24-2208	Cover Assy.	18	28-0242	Foam	38	25-0044	Blower Switch
3	24-2221	Drain Plate	19	25-0221	Socket Relay	39	25-0435	Knob
4	24-2270	Coil Support	20	25-0251	Relay 12V	40	25-0631	Switch Push 12V
5	24-2429	R.D. Bracket	21	25-0219	Relay 24V	41	25-0632	Switch Push 24V
6	24-2428	Bracket	22	25-0118	Thermostat	42	25-0693	Wiring Harness
7	24-2505	Plate	22	15-7501	Fan Assy. 12V	42	25-0689	Fuse 40A/12V (Blower)
8	24-2226	Cover Plate		15-7502	Fan Assy. 24V		25-0686	Fuse 20A/24V (Blower)
9	24-2430	Air Plenum	22A	25-0577	Venturi	43	25-0688	Fuse 30A/12V (Fan)
10	15-1561	Blower 12V	22B	25-0579	Fan	44	25-0685	Fuse 15A/24V (Fan)
	15-1562	Blower 24V	22C	25-0591	Motor 12V	44	28-0225	Gasket
10A	25-0048	Blower Housing		25-0592	Motor 24V	45	27-0030	Drain Hose
10B	25-0348	Housing Top	22D	29-0167	"C" Clip		27-0091	Drain Hose Clip
10C	25-0060	Venturi	23	23-0148	Finger Guard	46	28-0248	Overlay
10D	25-0200	Blower Wheel	24	28-0221	EPDM Seal	47	13-6095	Heater Conv. Kit
10E	25-0655	Motor 12V	25	29-0235	Cable Assy.	47A	22-0301	Heater Coil
	25-0660	Motor 24V	26	28-0244	Air Filter	47B	34-0267	Copper Tube Assy.
10F	25-0130	Motor Mount	27	25-0343	Pressure Switch	47C	26-0074	Heater Valve
10G	25-0601	Resistor 12V	28	34-0397	Copper Tube 3/8"	47D	27-0225	Heater Hose 5/8"
	25-0602	Resistor 24V	29	34-0398	Copper Tube 1/2"	47E	27-0059	Gear Clamp
10H	29-0130	Resistor Bracket	30	27-0602	O-Ring #8	47F	26-0345	Rotary Control
11	21-0341	Condenser Coil	31	27-0601	O-Ring #6	47G	26-0441	Bowden Cable
12	21-0339	Evaporator Coil	32	34-0261	Copper Tube Assy.	47J	25-0435	Knob
13	24-2433	Filter Support	33	27-0603	O-Ring #10	48	16-0200	Filter Unit
14	28-0243	Reticulated Foam	34	34-0364	Copper Tube 3/8"	49	16-0303	Filter Kit 12V
15	26-0018	Receiver Drier	35	26-0190	Block Valve		16-0304	Filter Kit 24V
16	27-1121	Gear Clamp 4"	36	23-0048	Adapter			

Heater-Air Conditioner **Model 369**



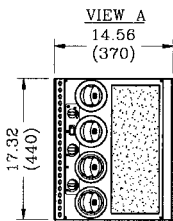
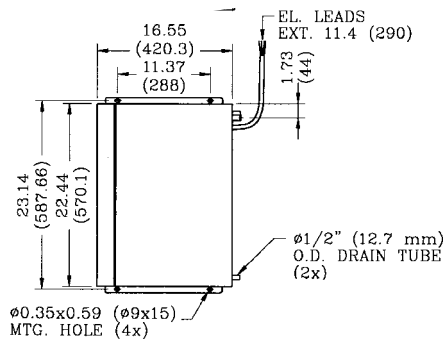
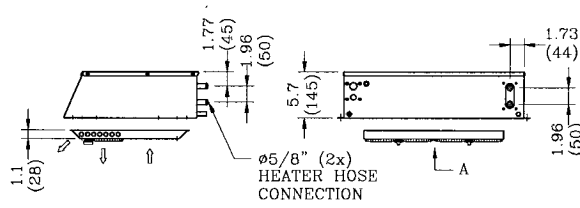
Part Descriptions: Specifications

Part No.		Specifications		
13-6903	Combo Unit 12V	Heating	-28000 Btu/hr (8200 W)	Casing made of 18GA (1.25mm) Cold Rolled Steel and finished in grey epoxy powder coat.
13-6904	Combo Unit 24V	Cooling	-20000 Btu/hr (5860 W)	
		Air Flow	-275 CFM (468 m ³ /h)	
		Current	-12 Amps/12V -6 Amps/24V	
		Weight	-30.9 lbs. (14 kg)	

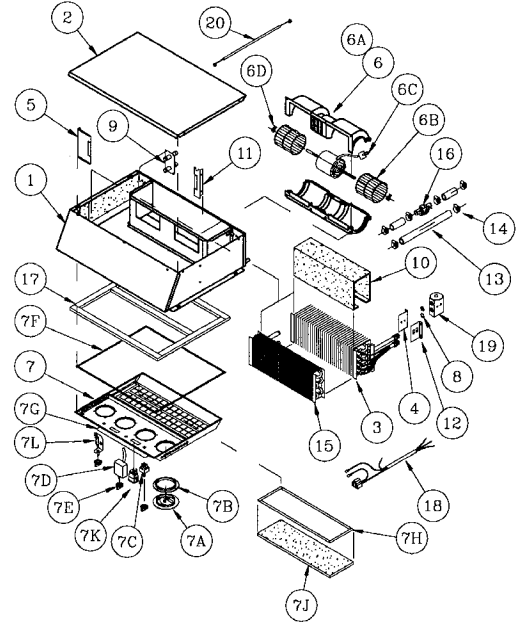
Features

The 369 is a low profile roof mount heater-air conditioner.

Dimension Profiles



EL. CONNECTIONS
 ORANGE -POWER (+)
 BLACK -GROUND (-)
 WHITE -TO PRESSURE SWITCH/COMPRESSOR
 BLUE -TO CONDENSER/RELAY (IF FAN COND.)



Part Descriptions: Specifications

No.	Part No.	Description	No.	Part No.	Description	No.	Part No.	Description
1	24-2842	Casing Assembly	7b	23-0048	Adapter	11	24-2722	Coil Support Bracket
2	24-2843	Cover Assembly	7c	25-0044	Blower Switch	12	24-2719	Valve Mtg. Bracket (R)
3	21-0399	Evaporator Coil	7d	25-0118	Thermostat	13	27-0225	Heater Hose (2x70mm&180mm)
4	24-2718	Valve mtg. brkt (L)	7e	25-0435	Knob	14	27-0059	Gear Clamp
5	24-2721	Coil Support (Long)	7f	28-0161	EPDM Seal (10mm)	15	22-0376	Heater Coil
6	15-0533	Blower 12V	7g	28-0248	Overlay	16	26-0025	Heater Valve
6	15-0534	Blower 24V	7h	28-0166	Hook Tape	17	28-0225	Gasket
6a	25-0017	Blower Housing	7j	28-0244	Air Filter	18	25-0737	Wiring Harness
6b	25-0021	Blower Wheel	7k	25-1106	Rocker Switch (G) 24V	19	26-0190	Block Valve
6c	25-0644	Motor 24V	7k	25-1105	Rocker Switch (G) 12V	20	26-0590	Bowden Cable
6c	25-0643	Motor 12V	7L	26-0350	Rotary Control w/nut			
6d	25-0022	Clip	8	27-0602	O-Ring #8			
7	26-0584	Air Plenum Assy. 24V	9	34-0560	Copper Tube Assy.			
7	26-0583	Air Plenum Assy. 12V	10	28-0230	Reticulated Foam			
7a	23-0005	Louver						