



Single Pulse Valve (SPV) Regulation

The purpose built valve for hot water regulation

We use only the best when we choose the standard valves for our heating centres – the MCC's single pulse valve. These valves can also be used independently for built-in vehicle heating systems.

Available in a number of different sizes, the valves are supplied either as “normally open” or as “normally closed”. The same pneumatic valve housing is used and solenoid valves are selected for the function normally open/closed.

Made from aluminium, the lightweight but robust valve housing is manufactured to withstand the glycol mixture commonly used in heating systems. This is a valve that will last and last.

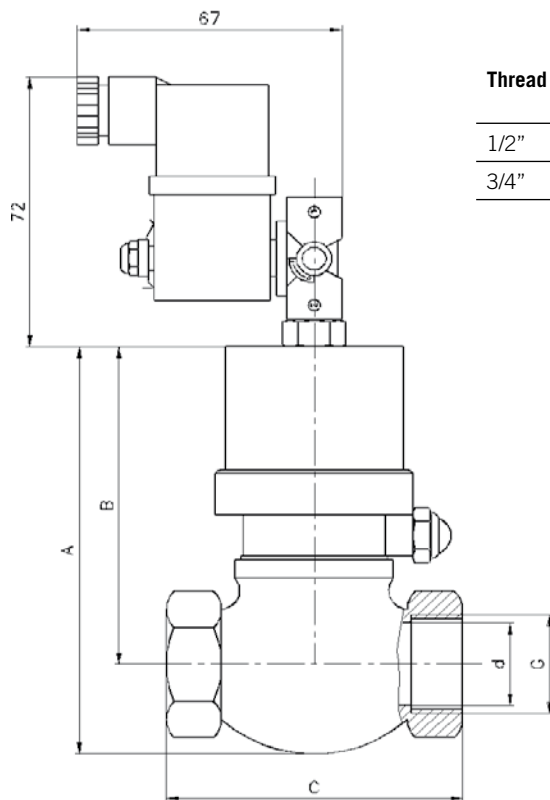


Features

- Pneumatic on/off valve for buses, ships etc.
- Low flow resistance
- Aluminium housing (= low weight)
- Very robust design
- The solenoid valve determines if the valve is “normal open” or “normal closed”

Single Pulse Valve (SPV) Regulation

MCC Regulations



Thread (G)	A (mm)	B (mm)	C (mm)	d (mm)	Weight (estimated)
1/2"	105	85	60	15	325 g
3/4"	113	85	75	20	364 g

Technical Data

Dimensions and weight	See table above
Water circuit pressure	0-8 bar
Air pressure	4-10 bar
Medium temperature	-30 to +120°C
Surrounding temperature	-30 to +80°C
Air connection	1/8"



Mobile Climate Control

Europe: Tel: +46 176 207 800
 North America: Tel: +1-905-482-2750
www.mcc-hvac.com