

Introduction

- This installation information is only valid for Insert non return valve.
- On receipt of the goods, remove all packaging material and check all the items for transport damage.
- Check that the delivered goods correspond to the specifications of the delivery note.
- For further information like installation dimensions, weights, performance, etc, please refer to the drawings, product information sheets, etc.

NOTE!

Before starting installation work, read the documentation accompanying the product.

The correct function and performance of the product are only guaranteed on condition that the instructions given in this document are strictly followed.

Mounting of the Insert non return valve

General

The non return valve is primarily designed for metal pipes made of copper or brass. The material must be soft enough to allow deformation, see picture 2 and 3.

Instructions

1. Make sure that the pipe is clean and free from burrs.
2. Press the valve into the pipe (picture 1), make sure that the flow direction correspond to the arrow on the valve.

Picture 1



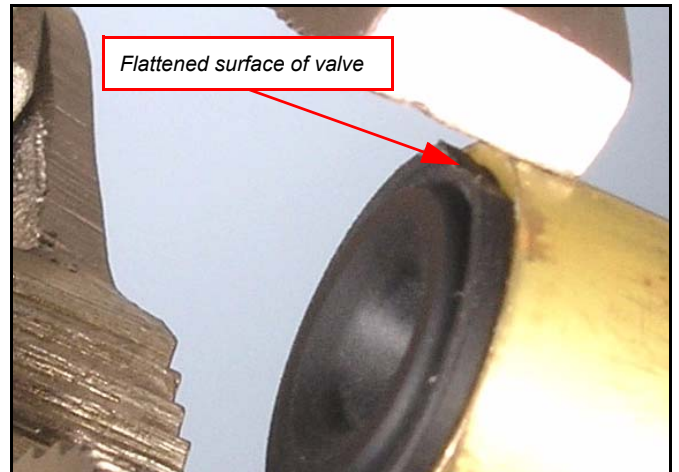
3. When the valve is in position, make a slight deformation of the pipe edge with a pliers (picture 2).

IMPORTANT! Make sure that the deformation is performed at the flat surface of the valve (picture 3).

Picture 2



Picture 3



UWE Verken AB
Box 262
S-601 04 Norrköping, Sweden
Phone +46 11 24 88 00
Fax +46 11 12 47 04
www.uwe.se

