



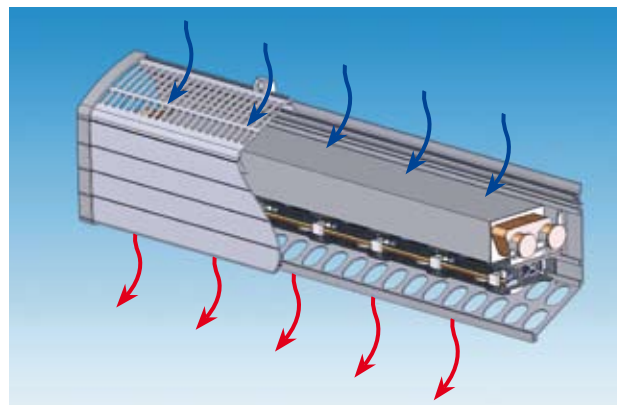
UW9 Heating Fan

High on heat, low on space

The MCC UW9 is a wall mounted heating fan that is part of the UC9 heating system. This very compact unit is easily customized to suit your specific requirements.

The UW9 has been designed for wall mounting in large vehicles, such as minibuses, buses and coaches. It consists of a heat exchanger with water connections and 24V or 12V axial fans with high and low speeds. The UW9 can be supplied with an optional number of fans and right, left or through waterflow connections. It can be used as a stand-alone heating source or, for greater effect, together with convectors.

You can choose electrostatic or mesh filter mounted over the heat exchanger as an extra option.

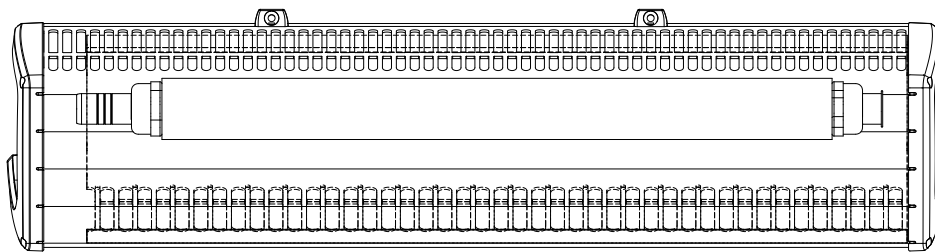


Features

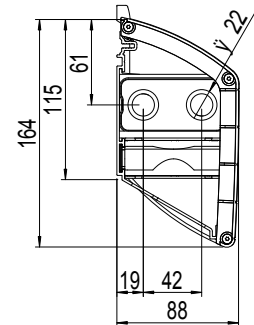
- Heat blower system for interior heating in buses with waterborne heating
- Pleasant smooth air distribution
- New attractive, smooth, yet rugged design
- Suitable for sloping floors
- Flexible design allows a number of configurations (3–15 fans)
- Long life fans
- Low weight
- Two fan speeds

UW9 Heating Fan

MCC Heating Fans



Dimensions in mm



Technical Data

Output at 28V, Q80 (kW)	4.4 (6 fans)
Output at 28V, Q100 (kW)	5.5 (6 fans)
Air flow at 28V (m ³ /h)	182 (6 fans)
Water connection	Copper Ø 22 mm
Voltage	12 or 24V
Depth	See drawing
Height	See drawing
Lengths	0.25–2 meters
Cover sections	Anodised aluminium
Colour	Natural

*) the Q value stands for the temperature difference between the water inlet temp and the air temp in the room where the heat exchanger is. For instance water inlet temp +80°C and air temp +20°C is known as Q60.



Mobile Climate Control

Europe: Tel: +46 176 207 800

North America: Tel: +1-905-482-2750

www.mcc-hvac.com