

# UWE Convector UC9

- very high heat output at a low weight

**NEW!**

## SUMMARY

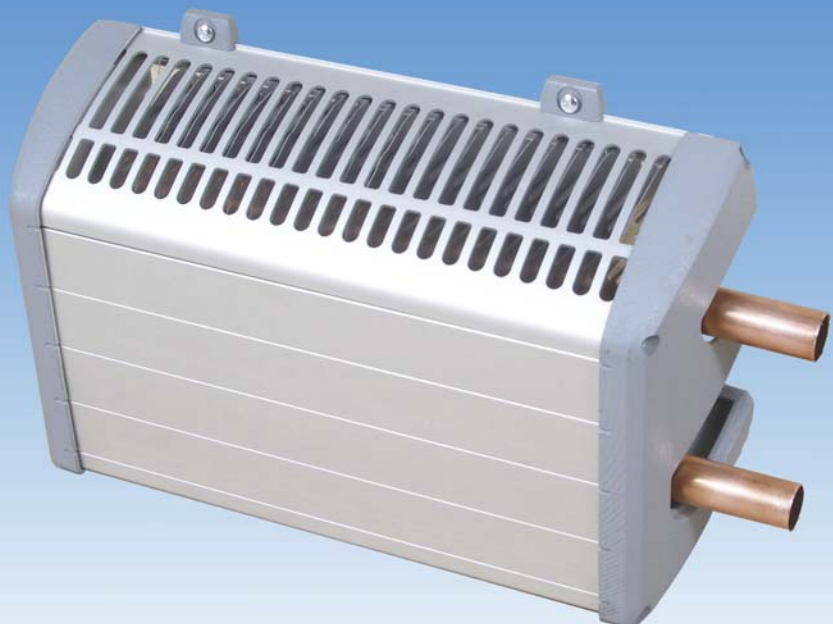
- Convector suitable for heating in buses, coaches, marine etc.
- Designed for vehicles with waterborne heating systems

## FEATURES

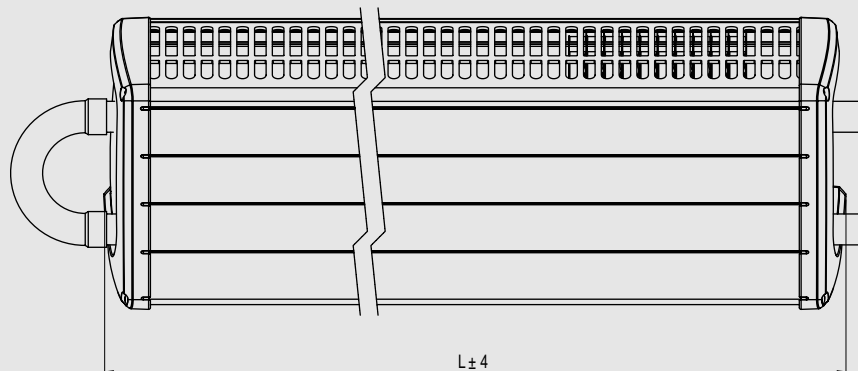
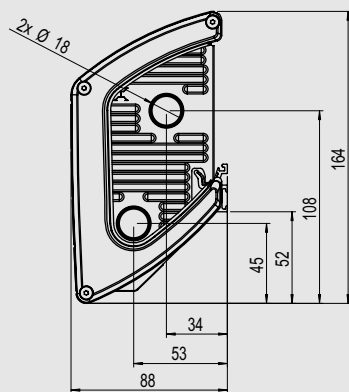
- High heat output
- Low weight
- New attractive, smooth, yet rugged design
- Suitable for sloping floors
- Noiseless and draught-free heating
- Maintenance-free
- Twin pipe for optimized heat output

**T**he new Convector UC9 offers high heating capacity in an attractive design with low weight.

When developing the convector the aim was to achieve as much heat output possible per weight and length unit. Design is also of utmost importance; the UC9 is looking modern and smooth, but still very durable. The shape of the convector is also making it possible to install it in vehicles with sloping walls/floors. A number of accessories is making the installation simple, with brackets and snap-on clips.



**UWE**®



*Dimensions in mm*

## Technical Data

Output	Heat output 610 W/m @ Q60* (1016 W/m @ Q100*)
Piping	Copper Ø 18 mm
Weight	2.5 kg/m
Liquid capacity	0.44 l/m
Depth	See drawing
Height	See drawing
Lengths	Up to 6000 mm
Cover sections	Anodised aluminium
Installation method	A number of brackets available, contact UWE
Connections	Copper Ø18 mm, a number of different connection variants available

\*) the Q value stands for the temperature difference between the water inlet temp and the air temp in the room where the heat exchanger is. For instance water inlet temp +80°C and air temp +20°C is known as Q60.

Adv020E02en

UWE Verken AB, Box 262, S-601 04 Norrköping, Sweden  
 Tel +46 11 248800, Fax +46 11 124704  
 www.uwe.se, email:info@uwe.se  
 Member of MCC Group - Certified ISO 9001



Specifications subject to change without notice. UWE and MCC are registered trademarks.