



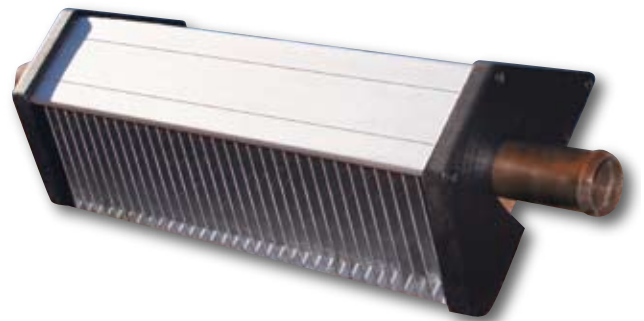
P400 Convector

Small and light and very, very hot

The MCC P400 Convector is the lightest copper convector in our range. Combining compact design with high heating capacity, the P400 is a single pipe convector, built around a single hot water copper pipe. The convector is light, compact and takes up very little space. It is also totally maintenance-free.

The P400 is specially designed to fit against the wall and to allow easy cleaning underneath. There are no sharp corners or joints that could for example damage shoes or clothing.

MCC's P400 comes with aluminium cover sections and end covers in black plastic.

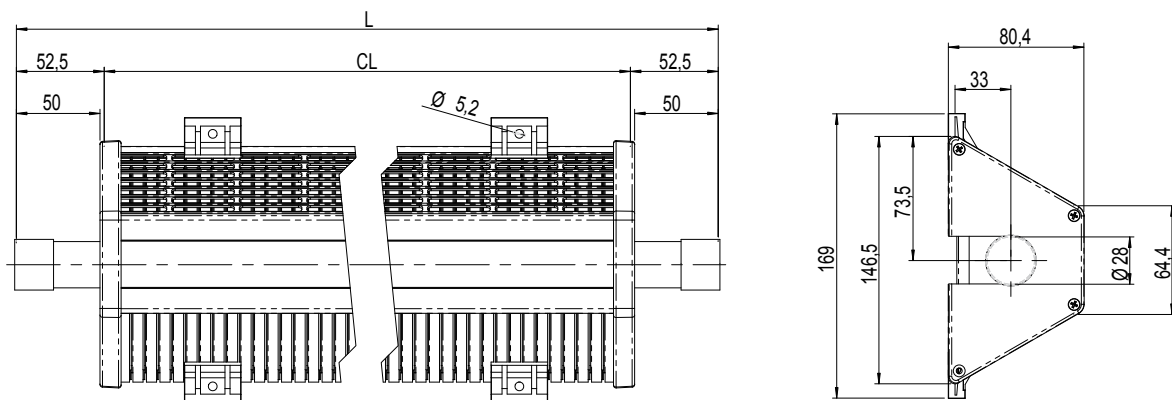


Features

- Suitable for heating in buses and coaches
- Designed for vehicles with waterborne heating systems
- Noiseless and draught-free heating
- Maintenance-free
- Single pipe for compact dimensions
- Copper piping
- Modern design

P400 Convector

MCC Convectors



Technical Data

Output	Heat output 501 W/m @ Q60 (835 W/m @ Q100)
Piping	Copper Ø 28 mm.
Weight	2.3 kg/m copper pipe
Liquid capacity	0.57 l/m
Depth	80.4 mm
Height	146.5 mm
Standard length	5100 mm
Colour	Aluminium
Installation method	Plastic supports, recommended spacing 800-1000 mm
Accessories	Selection of end fittings

*) the Q value stands for the temperature difference between the water inlet temp and the air temp in the room where the heat exchanger is placed. For instance Q60 can stand for water inlet temp +80°C and air temp +20°C.



Mobile Climate Control

Europe: Tel: +46 176 207 800
 North America: Tel: +1-905-482-2750
www.mcc-hvac.com